

vikingcue.com



2014

Winter/Spring Cue Guide

**NEW CUES
INSIDE!**



HANDCRAFTING CUES
SINCE 1965

800.397.0122



ELITE COLLECTION

Exclusive Two Feather Designs

GRAND ELITE VERSIONS AVAILABLE

White Wolf | TF-WLF | \$3950.00 NEW!
 New Design from Anthony "Two Feather" | Highly-figured Birdseye Maple Forearm | 342 Total Ebony, White Pearl, Faux Ivory and Turquoise Inlays | Stainless Joint with Turquoise and Silver Rings | Everest® Laminated Tip | ViKORE® Shaft | Viking SUPER Ferrule | Viking Quick Release Joint

Warrior Way | TF-WW | \$2150.00
 Highly-figured Birdseye Maple Forearm | West African Ebony Sleeve | 12 Genuine Turquoise Diamond Inlays | 66 Total inlays | Six (6) Vermillion, Ebony and Genuine Turquoise Points | Vermillion and Turquoise floating Inlays in Wrap Area | Six (6) Genuine Turquoise, Vermillion and Ebony Shaft Inlays | Everest® Laminated Tip | ViKORE® Shaft | Viking SUPER Ferrule | Viking Quick Release Joint

Four Corners | TF-4C | \$1995.00
 Highly-figured Birdseye Maple Forearm and Sleeve | 20 Genuine Turquoise Diamond Shape Inlays | 116 Total Inlays | 5 Birdseye Maple Ebony and Genuine Turquoise points | 90 Amazing Sleeve Inlays | 7 Silver Rings | Everest® Laminated Tip | ViKORE® Shaft | Viking SUPER Ferrule | Viking Quick Release Joint

Anasazi | TF-ANZ | \$1495.00
 Highly-figured Birdseye Maple Forearm and Sleeve | 96 Total Inlays | Six Birdseye Maple, Faux Ebony, Ivory and Genuine Turquoise Points | West African Ebony, Mirror, Faux Ivory, Birdseye & Turquoise Sleeve Inlays | Six Silver Rings | Everest® Laminated Tip | ViKORE® Shaft | Viking SUPER Ferrule | Viking Quick Release Joint | Embossed Leather Wrap

Moon Shadow | TF-MS | \$1395.00
 Ebony Forearm / Highly-figured Birdseye Maple Sleeve | 38 Total Inlays | Six (6) highly figured Birdseye Points | Six (6) Floating West African Ebony, Faux Ivory & Genuine Turquoise floating inlays | Ebony ring on Sleeve | Birdseye Maple Butt Cap | Everest® Laminated Tip | ViKORE® Shaft | Viking SUPER Ferrule | Viking Quick Release Joint

Coyote Trickster | TF-CT | \$595.00
 Highly-Figured Birdseye Maple Forearm | Six (6) West African Ebony Points | West African Ebony Butt | Faux Ivory Ring on Sleeve | Everest® Laminated Tip | ViKORE® Shaft | Viking SUPER Ferrule | Viking Quick Release Joint

Viking Cues

MADE IN THE USA

V174K | \$1,609
 Birdseye Maple Forearm | 24 South American Snakewood Mirrored High & Low Points | 90 Incredible Snakewood, West African Ebony, Turquoise & Recon Ivory Inlays | 3 Maple Rings | Viking SUPER Ferrule | Everest® Laminated Tip | ViKORE® Shaft | Viking Quick Release Joint

V173K | \$1,539
 Birdseye Maple Forearm | 5 West African Zebrawood Floating Points | 80 Amazing West African Ebony & Zebrawood Inlays | 3 Maple Rings | Everest® Laminated Tip | ViKORE® Shaft | Viking Quick Release Joint | Viking SUPER Ferrule

V172K | \$1,469
 Birdseye Maple Forearm | 16 East Indian Rosewood & Recon Ivory Mirrored High & Low Points | Intricate CNC Scrimshaw Design | Everest® Laminated Tip | ViKORE® Shaft | Viking Quick Release Joint | Viking SUPER Ferrule

V171K | \$1,309
 Birdseye Maple Forearm | 6 Premium Pearl Points | Premium Pearl Sleeve & Butt Cap with Intricate CNC Scrimshaw Design | Pearl Joint Rings w/ Scrimshaw | Everest® Laminated Tip | ViKORE® Shaft | Viking Quick Release Joint | Viking SUPER Ferrule | Double-Pressed Irish Linen Wrap

Viking Cue... Your Custom Cue Experts!

Choose Model. Choose Inlays. Choose Stains. SAME PRICE!!

*Standard Options only



V170K | \$1,109
 Birdseye Maple Forearm | 16 West African Ebony Mirrored High & Low Points | 24 Turquoise & West African Zebrawood Inlays | Everest® Laminated Tip | ViKORE® Shaft | Viking Quick Release Joint | Viking SUPER Ferrule

V169K | \$1,019
 Birdseye Maple & East Indian Rosewood Forearm | Rare 4th Axis Machining | 2 Piece Spliced Construction | 4 Maple Viking Inlays | Everest® Laminated Tip | ViKORE® Shaft | Viking Quick Release Joint | Viking SUPER Ferrule

V168K | \$989
 West African Ebony Forearm & Sleeve | 4 Central American Cocobolo & Michigan Maple Floating Points | 12 Sleeve Inlays | 3 Sets of Index Rings | Everest® Laminated Tip | ViKORE® Shaft | Viking Quick Release Joint | Viking SUPER Ferrule | Double-Pressed Irish Linen Wrap

V167K | \$949
 Birdseye Maple Forearm & Sleeve | 40 Exquisite Premium Pearl & Recon Ebony Inlays | Everest® Laminated Tip | ViKORE® Shaft | Viking Quick Release Joint | Viking SUPER Ferrule

V166K | \$939
 Birdseye Maple Forearm & Sleeve | 10 Mexican Bocote Floating Points | 30 Bocote and Birdseye Maple Sleeve Inlays | 40 Total Inlays | Everest® Laminated Tip | ViKORE® Shaft | Viking Quick Release Joint | Viking SUPER Ferrule | Premium Brown Leather

V165K | \$879
 West African Ebony Forearm & Sleeve | 4 Curl Maple, Mirror, Recon Ivory & Turquoise Floating Points | 56 Inlays | 20 Turquoise, Maple, Recon Ebony Rings | Everest® Laminated Tip | ViKORE® Shaft | Viking Quick Release Joint | Viking SUPER Ferrule | Double-Pressed Irish Linen Wrap

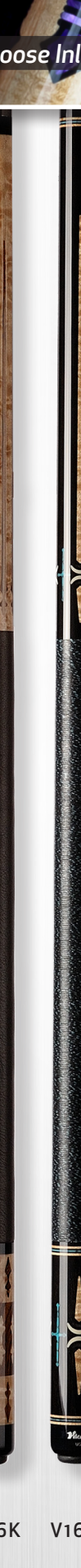
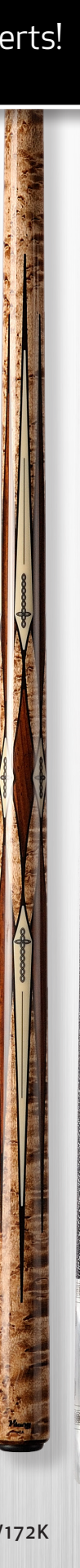
V164K | \$839
 Birdseye Maple Forearm | West African Ebony Sleeve | 4 Ebony, New Guinea Vermilion, Maple & Recon Ivory Points | 58 Inlays | 12 Vermilion, Maple & Ebony Rings | Everest® Laminated Tip | ViKORE® Shaft | Viking Quick Release Joint | Viking SUPER Ferrule | Double-Pressed Irish Linen Wrap

V163K | \$809
 West African Ebony Forearm & Sleeve | 4 Malachite, Recon Ivory & Mirror Floating Points | 32 Malachite, Recon Ivory & Mirror Sleeve Inlays | 4 Malachite Rings | Everest® Laminated Tip | ViKORE® Shaft | Viking Quick Release Joint | Viking SUPER Ferrule | Double-Pressed Irish Linen Wrap

V162K | \$769
 West African Ebony Forearm | 3 Premium Pearl Scrimshaw Floating Points | Pearl Sleeve w/ Intricate CNC Scrimshaw Design | 3 New Guinea Vermillion Rings | Everest® Laminated Tip | ViKORE® Shaft | Viking Quick Release Joint | Viking SUPER Ferrule | Double-Pressed Irish Linen Wrap

V161K | \$729
 Central American Cocobolo Forearm & Sleeve | 7 Mirror & African Holly Floating Points | 107 Amazing Inlays | Everest® Laminated Tip | ViKORE® Shaft | Viking Quick Release Joint | Viking SUPER Ferrule | Double-Pressed Irish Linen Wrap

NEW!



TF-WLF

TF-WW

TF-4C

TF-ANZ

TF-MS

TF-CT

V174K

V173K

V172K

V171K

V170K

V169K

V168K

V167K

V166K

V165K

V164K

V163K

V162K

V161K



GET A \$179 ViKORE AMERICAN PERFORMANCE SHAFT FREE on Viking Models \$239.00 and up



EXACTSHOT PURE PERFORMANCE SHAFT UPGRADE ONLY \$99 on 2014 Viking Models \$699.00 and up





Viking Custom Cues... with options that won't cost you more!

1000's of Configurations. Endless Possibilities... SAME PRICE!!

* Standard Options only

V160K | \$699

Birdseye Maple Forearm & Sleeve | 56 Extraordinary West African Ebony & New Guinea Vermillion Inlays | 3 Maple Rings | Everest® Laminated Tip | ViKORE Shaft | Viking Quick Release Joint | Viking SUPER Ferrule

V159K | \$669

West African Ebony Forearm & Sleeve | 4 Brazilian Tulipwood, Central American Cocobolo & Birdseye Maple Points | 48 Inlays | 2 Maple Rings | Everest® Laminated Tip | ViKORE Shaft | Viking Quick Release Joint | Viking SUPER Ferrule | Double-Pressed Irish Linen Wrap

V158K | \$649

Central American Cocobolo Forearm & Sleeve | 5 Recon Ivory Points | 40 Mexican Bocote, Recon Ivory & Ebony Inlays | 11 Cocobolo, Maple & Recon Ebony Rings | Everest® Laminated Tip | ViKORE Shaft | Viking Quick Release Joint | Viking SUPER Ferrule | Double-Pressed Irish Linen Wrap

V157K | \$629

West African Ebony Forearm & Sleeve | 4 Mexican Bocote & Recon Ivory Floating Points | 40 Inlays | 20 Bocote, Ebony & Recon Ivory Rings | Everest® Laminated Tip | ViKORE Shaft | Viking Quick Release Joint | Viking SUPER Ferrule | Double-Pressed Irish Linen Wrap

V156K | \$609 **NEW!**

Rosewood Forearm & Sleeve | 4 Birdseye Maple & Bicoite points | 120 Total Inlays | Everest® Laminated Tip | ViKORE Shaft | Viking Quick Release Joint | Viking SUPER Ferrule | Double-Pressed Irish Linen Wrap

V155K | \$599

Birdseye Maple Forearm & Sleeve | 4 Malachite, Recon Ebony & Mirror Floating Points | 56 Inlays | Everest® Laminated Tip | ViKORE Shaft | Viking Quick Release Joint | Viking SUPER Ferrule | Double-Pressed Irish Linen Wrap

V154K | \$599

Birdseye Maple Forearm | 6 Premium Pearl Floating Points | 6 Pearl Sleeve Inlays | 4 Rings | Everest® Laminated Tip | ViKORE Shaft | Viking Quick Release Joint | Viking SUPER Ferrule | Double-Pressed Irish Linen Wrap

V153K | \$599

Birdseye Maple Forearm & Sleeve | 4 Premium Pearl & Mirror Points | Pearl & Mirror Sleeve Inlays | Everest® Laminated Tip | ViKORE Shaft | Viking Quick Release Joint | Viking SUPER Ferrule | Double-Pressed Irish Linen Wrap

V152K | \$589

West African Ebony Forearm | 4 Intricate, Premium Pearl Floating Points | White Pearl Sleeve Inlays | 4 Sets of Index Rings | Everest® Laminated Tip | ViKORE Shaft | Viking Quick Release Joint | Viking SUPER Ferrule | Double-Pressed Irish Linen Wrap

V151K | \$589

Birdseye Maple Forearm & Sleeve | 6 South American Snakewood Floating Points | 36 Snakewood & West African Zebrawood Inlays | Everest® Laminated Tip | ViKORE Shaft | Viking Quick Release Joint | Viking SUPER Ferrule | Double-Pressed Irish Linen Wrap

NEW!

NEW!

V150K | \$579

Birdseye Maple Forearm & Sleeve | 6 Intricate Recon Ebony Floating Points | 6 Sleeve Inlays | Maple Rings | Everest® Laminated Tip | ViKORE Shaft | Viking Quick Release Joint | Viking SUPER Ferrule | Double-Pressed Irish Linen Wrap

V149K | \$579

Birdseye Maple Forearm | 4 Premium Pearl Points | Scrimshaw Dragon | 4 Index Rings | Everest® Laminated Tip | ViKORE Shaft | Viking Quick Release Joint | Viking SUPER Ferrule

V148K | \$559

Birdseye Maple Forearm | 4 Recon Ebony & Mirror Points | 8 Mirror Sleeve Inlays | 4 Sets of Index Rings | Everest® Laminated Tip | ViKORE Shaft | Viking Quick Release Joint | Viking SUPER Ferrule | Double-Pressed Irish Linen Wrap

V147K | \$559

Birdseye Maple Forearm | 4 Turquoise & Mirror Points | 32 Inlays | 3 Sets of Index Rings | Everest® Laminated Tip | ViKORE Shaft | Viking Quick Release Joint | Viking SUPER Ferrule | Double-Pressed Irish Linen Wrap

V146K | \$559

West African Ebony Forearm & Sleeve | 5 West African Zebrawood Points | Zebrawood & Recon Ivory Inlays | Everest® Laminated Tip | ViKORE Shaft | Viking Quick Release Joint | Viking SUPER Ferrule | Double-Pressed Irish Linen Wrap

V145K | \$549

West African Ebony Forearm & Sleeve | 4 Premium Pearl Points | 48 Inlays | 12 Pearl Rings | Pearl Butt Cap | Everest® Laminated Tip | ViKORE Shaft | Viking Quick Release Joint | Viking SUPER Ferrule | Double-Pressed Irish Linen Wrap

V144K | \$539

West African Ebony Forearm & Sleeve | 4 New Guinea Vermillion & Premium Pearl & Mirror Points | 41 Inlays | 6 Vermillion & Pearl Rings | Everest® Laminated Tip | ViKORE Shaft | Viking Quick Release Joint | Viking SUPER Ferrule | Double-Pressed Irish Linen Wrap

V143K | \$539

Birdseye Maple Forearm | 4 Recon Ebony & Mirror Points | 32 Inlays | 12 Mirror Sleeve Inlays | Everest® Laminated Tip | ViKORE Shaft | Viking Quick Release Joint | Viking SUPER Ferrule | Double-Pressed Irish Linen Wrap

V142K | \$539

Birdseye Maple Forearm | 4 West African Zebrawood & Central American Cocobolo Points | 52 Inlays | 14 West African Ebony, Cocobolo & Zebrawood Rings | Everest® Laminated Tip | ViKORE Shaft | Viking Quick Release Joint | Viking SUPER Ferrule | Double-Pressed Irish Linen Wrap

V141K | \$529

Birdseye Maple Forearm | 8 Recon Ebony Points w/Premium Pearl Inlays | 36 Inlays | 4 Birdseye Maple Index Rings | Everest® Laminated Tip | ViKORE Shaft | Viking Quick Release Joint | Viking SUPER Ferrule | Double-Pressed Irish Linen Wrap

V140K | \$529 **NEW!**

Rosewood Forearm & Sleeve | 4 Birdseye Maple Turquoise Floating Points | 40 Inlays | Everest® Laminated Tip | ViKORE Shaft | Viking Quick Release Joint | Viking SUPER Ferrule | Double-Pressed Irish Linen Wrap



V160K V159K V158K V157K V156K V155K V154K V153K V152K V151K V150K V149K V148K V147K V146K V145K V144K V143K V142K V141K V140K



GET A \$179 VIKORE AMERICAN PERFORMANCE SHAFT FREE on Viking Models \$239.00 and up

FREE



EXACTSHOT PURE PERFORMANCE SHAFT UPGRADE ONLY \$199 on 2014 Viking Models \$189.00 - \$699.00

\$199



Express Yourself. 1000's of configurations. Same Price.

Choose Wrap. Choose Inlays. Choose Stains. SAME PRICE!!

* Standard Options only



V139K V138K V137K V136K V135K V134K V133K V132K V131K V130K V129K V128K V127K V126K V125K V1024K V124K V1023K V123K V122K V121K V120K

V139K | \$519
Birdseye Maple Forearm & Sleeve | 4 Premium Pearl & West African Zebrawood Floating Points | 76 Inlays | 4 Zebrawood & Pearl Rings | Everest® Laminated Tip | ViKORE Shaft | Viking Quick Release Joint | Viking SUPER Ferrule | Double-Pressed Irish Linen Wrap

V138K | \$509
East Indian Rosewood Forearm & Sleeve | 4 West African Zebrawood Points | 112 Inlays | 8 Premium Pearl Dots | Everest® Laminated Tip | ViKORE Shaft | Viking Quick Release Joint | Viking SUPER Ferrule | Double-Pressed Irish Linen Wrap

V137K | \$509
West African Ebony Forearm & Sleeve | 5 New Guinea Vermillion & Birdseye Maple Points | 50 Inlays | 6 Vermillion & Maple Rings | Everest® Laminated Tip | ViKORE Shaft | Viking Quick Release Joint | Viking SUPER Ferrule | Double-Pressed Irish Linen Wrap

V136K | \$499
East Indian Rosewood Forearm & Sleeve | 4 Australian Lacewood & Birdseye Maple Floating Points | 16 Inlays | Everest® Laminated Tip | ViKORE Shaft | Viking Quick Release Joint | Viking SUPER Ferrule | Double-Pressed Irish Linen Wrap

V135K | \$489
Curly Maple Forearm | West African Zebrawood Sleeve | 16 West African Ebony, West African Zebrawood & 4 sets of Birdseye Maple Rings | Everest® Laminated Tip | ViKORE Shaft | Viking Quick Release Joint | Viking SUPER Ferrule | Double-Pressed Irish Linen Wrap

V134K | \$489
Birdseye Forearm & Sleeve | 4 Points | 56 Central American Cocobolo & Recon Ebony Inlays | Everest® Laminated Tip | ViKORE Shaft | Viking Quick Release Joint | Viking SUPER Ferrule | Double-Pressed Irish Linen Wrap

V133K | \$479
Central American Cocobolo Forearm & Sleeve | 20 West African Ebony & Birdseye Maple Rings | Everest® Laminated Tip | ViKORE Shaft | Viking Quick Release Joint | Viking SUPER Ferrule | Double-Pressed Irish Linen Wrap

V132K | \$479
West African Ebony Forearm & Sleeve | 4 Birdseye Maple and Vermillion Points | 25 Ebony, New Guinea Vermillion & Birdseye Maple Rings | Everest® Laminated Tip | ViKORE Shaft | Viking Quick Release Joint | Viking SUPER Ferrule | Double-Pressed Irish Linen Wrap

V131K | \$469
Central American Cocobolo Forearm & Sleeve | 15 West African Ebony, West African Zebrawood & Birdseye Maple Rings | Everest® Laminated Tip | ViKORE Shaft | Viking Quick Release Joint | Viking SUPER Ferrule | Double-Pressed Irish Linen Wrap

V130K | \$459
Birdseye Maple Forearm | West African Zebrawood Sleeve | 4 Zebrawood Points | 12 Central American Cocobolo & Birdseye Maple Rings | Everest® Laminated Tip | ViKORE Shaft | Viking Quick Release Joint | Viking SUPER Ferrule | Double-Pressed Irish Linen Wrap

V129K | \$449
Birdseye Maple Forearm & Sleeve | 3 Premium Pearl Points | 30 Inlays | Everest® Laminated Tip | ViKORE Shaft | Viking Quick Release Joint | Viking SUPER Ferrule | Double-Pressed Irish Linen Wrap

V128K | \$439
Birdseye Maple Forearm & Sleeve | Ebony, Central American Cocobolo, Birdseye & West African Zebrawood Rings | 16 Total Rings | Everest® Laminated Tip | ViKORE Shaft | Viking Quick Release Joint | Viking SUPER Ferrule | Double-Pressed Irish Linen Wrap

V127K | \$429
East Indian Rosewood Forearm & Sleeve | 15 Premium Pearl Inlays | 11 Pearl Rings | Pearl Butt Cap | Everest® Laminated Tip | ViKORE Shaft | Viking Quick Release Joint | Viking SUPER Ferrule | Double-Pressed Irish Linen Wrap

V126K | \$419
Birdseye Maple Forearm & Sleeve | 4 West African Zebrawood Floating Points | 8 Zebrawood Inlays | 3 Zebrawood Rings | Everest® Laminated Tip | ViKORE Shaft | Viking Quick Release Joint | Viking SUPER Ferrule | Double-Pressed Irish Linen Wrap

V125K | \$419
West African Ebony Forearm & Sleeve | 3 Sets of West African Zebrawood/Birdseye Maple/Ebony Rings | Everest® Laminated Tip | ViKORE Shaft | Viking Quick Release Joint | Viking SUPER Ferrule | Double-Pressed Irish Linen Wrap

V1024K | \$419 NEW!
Birdseye Maple Forearm with Midnight Stain Premium Pearl Sleeve | 4 Pearl Points with Matching Butt Inlays | Everest® Laminated Tip | ViKORE Shaft | Viking Quick Release Joint | Viking SUPER Ferrule | Double-Pressed Irish Linen Wrap

V124K | \$419
West African Ebony Forearm & Sleeve | 3 Sets of Central American Cocobolo/Birdseye Maple/Ebony Rings | Everest® Laminated Tip | ViKORE Shaft | Viking Quick Release Joint | Viking SUPER Ferrule | Double-Pressed Irish Linen Wrap

V1023K | \$399 NEW!
Birdseye Maple Forearm & Sleeve | 20 Exquisite Premium Pearl & Black Inlays | Everest® Laminated Tip | Viking SUPER Ferrule | ViKORE Shaft | Viking Quick Release Faux Ivory Butt and Joint

V123K | \$399
Birdseye Maple Forearm | Premium Pearl Sleeve | 4 Pearl Points | Everest® Laminated Tip | ViKORE Shaft | Viking Quick Release Joint | Viking SUPER Ferrule | Double-Pressed Irish Linen Wrap

V122K | \$379
Central American Bacote Forearm & Sleeve | 3 Sets of Mirror/Maple Index Rings | Everest® Laminated Tip | ViKORE Shaft | Viking Quick Release Joint | Viking SUPER Ferrule | Premium Black Ostrich Leather Wrap

V121K | \$379
Central American Cocobolo Forearm & Sleeve | 3 Sets of Mirror/Maple Index Rings | Everest® Laminated Tip | ViKORE Shaft | Viking Quick Release Joint | Viking SUPER Ferrule | Premium Black Ostrich Leather Wrap

V120K | \$359
Birdseye Maple Forearm/Sleeve | 4 African Wenge Points | Everest® Laminated Tip | ViKORE Shaft | Viking Quick Release Joint | Viking SUPER Ferrule | Double-Pressed Irish Linen Wrap



GET A \$179 VIKORE AMERICAN PERFORMANCE SHAFT FREE on Viking Models \$239.00 and up

FREE



EXACTSHOT PURE PERFORMANCE SHAFT UPGRADE ONLY \$199 on 2014 Viking Models \$189.00 - \$699.00



V119K | \$359
 Birdseye Maple Forearm | Central American Cocobolo Sleeve | Cocobolo, Maple & Recon Ivory Rings | 13 Total Rings | Everest® Laminated Tip | ViKORE Shaft | Viking Quick Release Joint | Viking SUPER Ferrule | Double-Pressed Irish Linen Wrap

V118K | \$359
 Birdseye Maple Forearm/Sleeve | 3 Central American Cocobolo Rings | 16 Total Rings | Everest® Laminated Tip | ViKORE Shaft | Viking Quick Release Joint | Viking SUPER Ferrule | Double-Pressed Irish Linen Wrap

V1017K | \$349 NEW!
 Birdseye Maple Forearm/Sleeve | 2 Cocobolo Points with matching Butt Inlays | 2 sets of Cocobolo and Black Rings | Everest® Laminated Tip | ViKORE Shaft | Viking Quick Release Joint | Grain Enhancement Stain | Viking SUPER Ferrule

V117K | \$349
 Birdseye Maple Forearm/Sleeve | 4 Points | Everest® Laminated Tip | ViKORE Shaft | Viking Hustler Style Quick Release Joint | Grain Enhancement Stain | Viking SUPER Ferrule

V116K | \$339
 Birdseye Maple Forearm/Sleeve | 32 Pearl & Recon Inlays on Sleeve | 2 Premium Pearl Rings | Everest® Laminated Tip | ViKORE Shaft | Viking Quick Release Joint | Viking SUPER Ferrule | Double-Pressed Irish Linen Wrap

V115K | \$329
 East Indian Rosewood Forearm/Sleeve | 4 Rosewood Points w/ Maple Veneer | Birdseye Maple Butt Cap | Everest® Laminated Tip | ViKORE Shaft | Viking Quick Release Joint | Viking SUPER Ferrule | Double-Pressed Irish Linen Wrap

V1014K | \$319 NEW!
 Michigan Maple Forearm/Sleeve | 12 Total Inlays with 2 Sets of Cocobolo and White Pearl | Everest® Laminated Tip | ViKORE Shaft | Viking Quick Release Joint

V114K | \$309
 Birdseye Maple Forearm/Sleeve | 7 Premium Pearl Rings | Everest® Laminated Tip | ViKORE Shaft | Viking Quick Release Joint | Grain Enhancement Stain | Viking SUPER Ferrule | Double-Pressed Irish Linen Wrap

V1013K | \$299 NEW!
 Birdseye Maple Forearm with Midnight Stain | Premium Pearl Sleeve | 4 Pearl Butt Inlays | Everest® Laminated Tip | ViKORE Shaft | Viking Quick Release Joint with 2 sets of Pearl Rings | Viking SUPER Ferrule | Double-Pressed Irish Linen Wrap

V113K | \$299
 Birdseye Maple Forearm/Sleeve | 8 West African Ebony Rings | 4 Central American Cocobolo Rings | Everest® Laminated Tip | ViKORE Shaft | Viking Quick Release Joint | Viking SUPER Ferrule | Double-Pressed Irish Linen Wrap

V112K | \$299
 Birdseye Maple Forearm/Sleeve | 4 West African Ebony Rings | 9 Central American Cocobolo & Maple Rings | Everest® Laminated Tip | ViKORE Shaft | Viking Quick Release Joint | Viking SUPER Ferrule | Double-Pressed Irish Linen Wrap



V119K V118K V1017K V117K V116K V115K V1014K V114K V1013K V113K V112K V1011K V111K V110K V109K V108K V1007K V107K V106K V105K V104K



V1011K | \$289 NEW!
 Michigan Maple Forearm/Sleeve | 2 Premium Pearl | Black Inlays | Everest® Laminated Tip | ViKORE Shaft | Viking Quick Release Joint | Viking SUPER Ferrule | Double-Pressed Irish Linen Wrap

V111K | \$289
 Birdseye Maple Forearm/Sleeve | 4 Premium Pearl Rings | Everest® Laminated Tip | ViKORE Shaft | Viking Quick Release Joint | Grain Enhancement Stain | Viking SUPER Ferrule | Double-Pressed Irish Linen Wrap

V110K | \$279
 Birdseye Maple Forearm/Sleeve | 3 Sets of Index Rings | Everest® Laminated Tip | ViKORE Shaft | Viking Quick Release Joint | Grain Enhancement Stain | Viking SUPER Ferrule | Double-Pressed Irish Linen Wrap

V109K | \$279
 Birdseye Maple Forearm/Sleeve | 6 Maple Rings | 3 Premium Pearl Rings | Everest® Laminated Tip | ViKORE Shaft | Viking Quick Release Joint | Grain Enhancement Stain | Viking SUPER Ferrule | Double-Pressed Irish Linen Wrap

V108K | \$279
 East Indian Rosewood Forearm/Sleeve | 3 Central American Cocobolo Rings | 6 Premium Pearl Rings | Everest® Laminated Tip | ViKORE Shaft | Viking Quick Release Joint | Viking SUPER Ferrule | Double-Pressed Irish Linen Wrap

V1007K | \$269 NEW!
 Michigan Maple Forearm/Sleeve | 2 Premium Cocobolo Inlays | Everest® Laminated Tip | ViKORE Shaft | Viking Quick Release Joint | Viking SUPER Ferrule | Double-Pressed Irish Linen Wrap

V107K | \$269
 Michigan Maple Forearm/Sleeve | 3 Sets of Box Index Rings (27 Inlays) | Everest® Laminated Tip | ViKORE Shaft | Viking Quick Release Joint | Viking SUPER Ferrule | Double-Pressed Irish Linen Wrap

V106K | \$269
 Michigan Maple Forearm/Sleeve | Everest® Laminated Tip | ViKORE Shaft | Viking Quick Release Joint | 12 Rings | Grain Enhancement Stain | Viking SUPER Ferrule | Double-Pressed Irish Linen Wrap

V105K | \$259
 Michigan Maple Forearm | Everest® Laminated Tip | Viking Quick Release Joint | Premium Pearl Sleeve | Grain Enhancement Stain | ViKORE Shaft | Viking SUPER Ferrule | Double-Pressed Irish Linen Wrap

V104K | \$239
 Michigan Maple Forearm/Sleeve | ViKORE Shaft | Everest® Laminated Tip | Viking Quick Release Joint | Grain Enhancement Stain | Maple Index Rings |



V103 | \$219
One cue, two stains, more value.
 Michigan Maple | LePro Tip
 V PRO Shaft | Viking Quick Release Joint |
 Dual Grain Enhancement Stain | Viking SUPER
 Ferrule | Double-Pressed Irish Linen Wrap

V102 | \$209
Play with conviction.
 Michigan Maple Forearm/Sleeve | LePro Tip
 | V PRO Shaft | Viking Quick Release Joint
 | Grain Enhancement Stain | Viking SUPER
 Ferrule | Double-Pressed Irish Linen Wrap

V101 | \$199
A timeless classic with Irish Linen Wrap
 Michigan Maple Forearm/Sleeve | LePro Tip
 V PRO Shaft | Viking Quick Release Joint | Grain
 Enhancement Stain | Viking SUPER Ferrule

Available in 8 Colors

V100 | \$189
A timeless classic.
 Michigan Maple Forearm/Sleeve | LePro Tip
 V PRO Shaft | Viking Quick Release Joint | Grain
 Enhancement Stain | Viking SUPER Ferrule



The Viking V PRO shaft starts with engineering excellence. Our Aged Wood maple shafts go through 8 to 10 Turns over 5 years for maximum stability. If you are looking for more accuracy, the V PRO is your shaft.

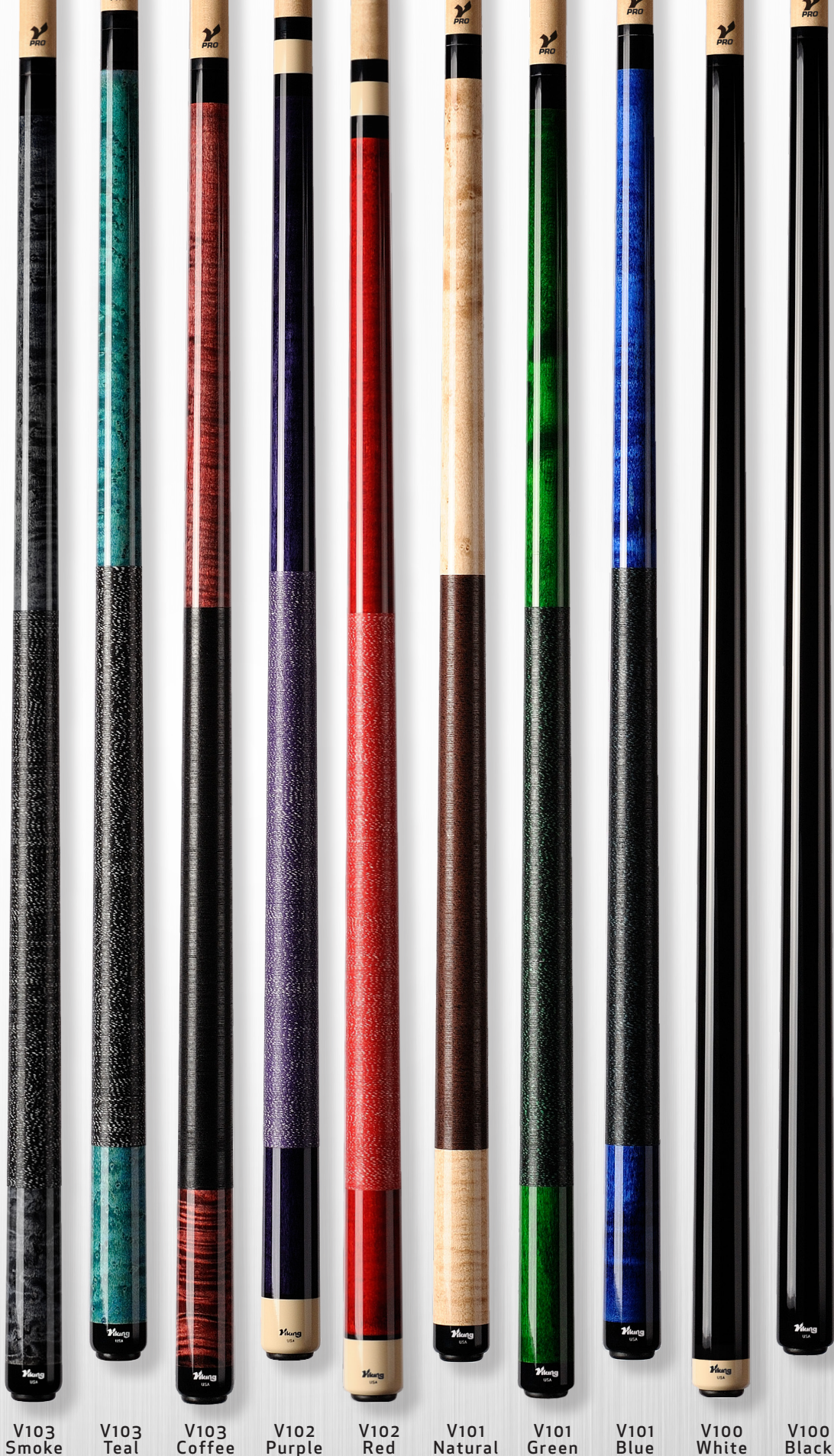
V176K | \$369
3 PIECE BREAK / JUMP CUE
 Birdseye Maple Forearm/Sleeve |
 Viking Phenolic Tip | V CRUSH Shaft
 | Viking Break Jump Quick Release
 Joint | Grain Enhancement Stain |
 Viking SUPER Ferrule | Double-
 Pressed Irish Linen Wrap

BREAK JUMP CUE



V175K | \$259
FAT DADDY BREAK CUE
 Birdseye Maple Forearm/Sleeve
 | Viking Phenolic Tip | V CRUSH
 Shaft Viking Quick Release
 Joint | Grain Enhancement
 Stain | Viking SUPER
 Ferrule | Double-Pressed
 Irish Linen Wrap

BREAK CUE



V103 Smoke V103 Teal V103 Coffee V102 Purple V102 Red V101 Natural V101 Green V101 Blue V100 White V100 Black



Every Month, the artisan at Viking Cueworks releases two new Limited Edition Viking Cues.
Available only at SmartShops Viking Dealers.

To find your nearest Viking SmartShops Dealer use our Website Dealer Locator & Search for SmartShops today!



smartshops

smart deals every month



VIKORE SHAFT UPGRADE
\$99 on 2014 Viking Models
 V100 - V103



EXACTSHOT SHAFT UPGRADE
\$199 on 2014 Viking Models
 \$189.00 - \$699.00



VIKORE PERFORMANCE

Select SmartShops Cues Feature the VIKORE American Performance Shaft

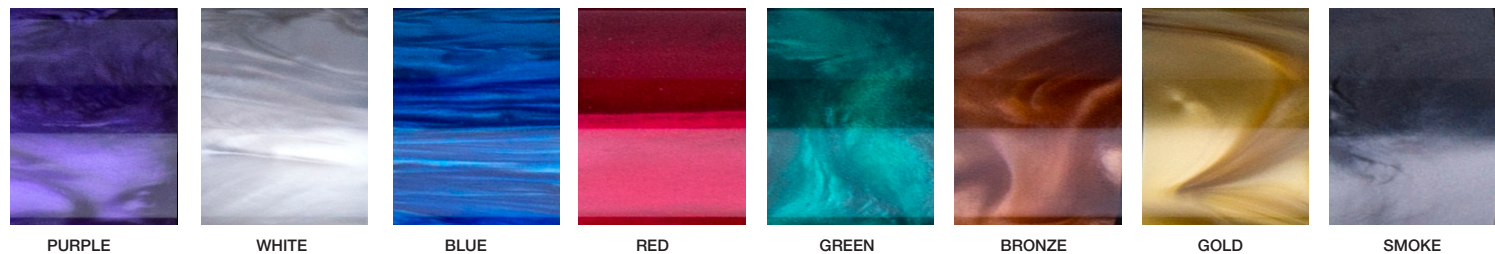
options



Choosing the perfect color for your Viking cue might take some time. That's why we put all of the options right here so you can make the choices that evoke your feelings and express your character.

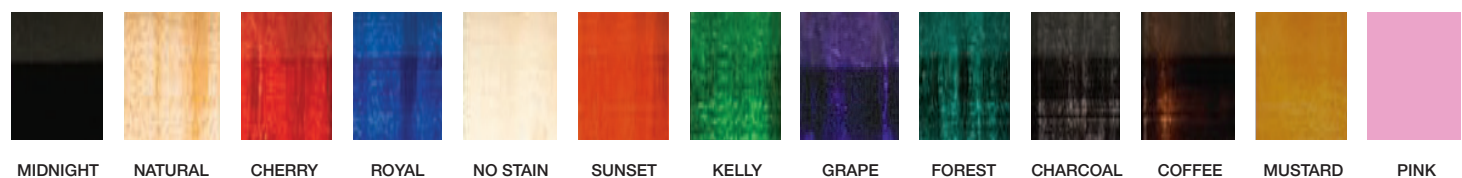
pearls

A classic touch for any cue, in 8 beautiful colors.

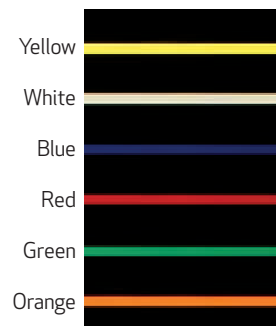


stain

Add rich, vibrant colors to any maple or bird's-eye maple butt. Choose from these 13 colors.



vinyl



engraving

Personalize your cue with our custom engraving. Choose from Roman, Block or Script Lettering



linen wraps 100% Irish Linen



leather wraps



ferrules



Viking Indestructible SUPER Ferrule
All Viking Cue Shafts feature the finest ferrule the billiards industry has ever known. Formulated from a proprietary material, the Viking SUPER ferrule is virtually indestructible! We put our ferrule through the industry's toughest impact tests; it's more like a torture test. With 250,000 in play and no cracked ferrules, you know we've done our homework. No other ferrule in the business can say that.

joint styles

- (A) High Impact Black QR Joint
- (B) High Impact Black / Stainless Steel QR Joint
- (C) Stainless Steel QR Joint
- (D) Hustler / Sneaky Pete QR Joint

Each Viking Quick Release joint has wood on wood contact surfaces for a natural, solid feel. The different shaft and butt material combinations modify the type of hit produced. The type of hit refers to how the cue feels when energy flows down the shaft, through the joint, and into the butt upon striking the ball. In most instances, joint selection is merely a matter of personal preference. Viking manufactures each joint component in-house to assure the parts are flawless. Then, using custom designed CNC machinery, we assemble the joints to assure dead-on accuracy.



tips

Enhance your gameplay and customize your cue with the best tips available.



Tiger Sniper® Tips
Tiger SNIPER Laminated Cue Tips are made from a boar hide that is tanned the old fashioned way, under ground. Treated slowly and using a unique vacuum lamination process, each hide takes up to a year to tan completely.



Tiger Everest® Tips
Everest Laminated Cue Tip is known as the most durable and advanced cue tip ever created. VACULAM process eliminates mushrooming and the special red layer warns when replacement is needed. This cue tip shapes like a hard tip, hits like a medium and has a control like a soft tip.



Le Professional Tips
Le Professional ("Le Pro") tips are an industry standard, crafted from vegetable-tanned oak leather. The Le Pro tip has a special protective coating that seals and preserves the leather until the cue is ready to play.



Kamui™ Black Soft Tips
The New KAMUI™ Black tip is designed to add more spin to the cue ball. The player can put more spin to the cue ball with relatively slower speed of the pool cue. The elasticity of the black leather absorbs the momentum of the cue so as to propel the cue ball with desired spin.

NOTE: We stock most tips from most manufacturers. Contact Viking Cue or your local Viking Dealer for more info.

Cue with Case • MSRP \$89.99

VALHALLA **NEW** GLOWSTICKS

Features:

- North American Hard Rock Maple
- Vibrant Opaque Colors
- Silver Rings
- Pro Taper Shaft with 12.75 tip
- High Impact Ferrule
- Premium Leather Tip
- Viking Weight Bolt System
- 1 x 1 Embroidered GlowSticks Case



VALHALLA GLOWSTICKS

- VAL-BLU Neon Blue GLOWSTICKS Cue with Blue Valhalla 1 X 1 GLOWSTICKS Case
- VAL-GRN Neon Green GLOWSTICKS Cue with Green Valhalla 1 X 1 GLOWSTICKS Case
- VAL-ORG Neon Orange GLOWSTICKS Cue with Orange Valhalla 1 X 1 GLOWSTICKS Case
- VAL-PNK Neon Pink GLOWSTICKS Cue with Pink Valhalla 1 X 1 GLOWSTICKS Case

NEW

VALHALLA
unrivaled craftsmanship.
merciless performance.

ALL ACCESS

WWW.VALHALLACUES.COM

Designed, engineered and backed by the craftsmen at Viking, each Valhalla cue has a Limited Lifetime warranty and brings WICKED performance and KILLER style.

Led by our employees, retailers and fans, Valhalla is way more than just a pool cue ... it is an attitude and way of life.

VAL-049 | \$179.99 **NEW!**

North American Hard Rock Maple | Pro Taper Shaft with 12.75 Premium Laminated Tip | Michigan Maple Forearm/Sleeve | Hustler Style Joint | High Res Multi-Color Point Transfers | 5/16 x 18 Joint | Viking Weight Bolt System

VAL-048 | \$159.99

Michigan Maple Forearm/Sleeve | Black High Impact Butt & Joint | Leather Wrap | High Impact Ferrule | 5 Nickel Silver Rings | Le Pro Tip | High Res Multi-Color Point Transfers | Special Quick Release Joint | Viking Weight Bolt System

VAL-047 | \$159.99

Michigan Maple Forearm/Sleeve | Black High Impact Butt & Joint | Leather Wrap | High Impact Ferrule | 5 Nickel Silver Rings | Le Pro Tip | High Res Multi-Color Point Transfers | Special Quick Release Joint | Viking Weight Bolt System

VAL-046 | \$159.99

Michigan Maple Forearm/Sleeve | Black High Impact Butt & Joint | Leather Wrap | High Impact Ferrule | 5 Nickel Silver Rings | Le Pro Tip | High Res Multi-Color Point Transfers | Special Quick Release Joint | Viking Weight Bolt System

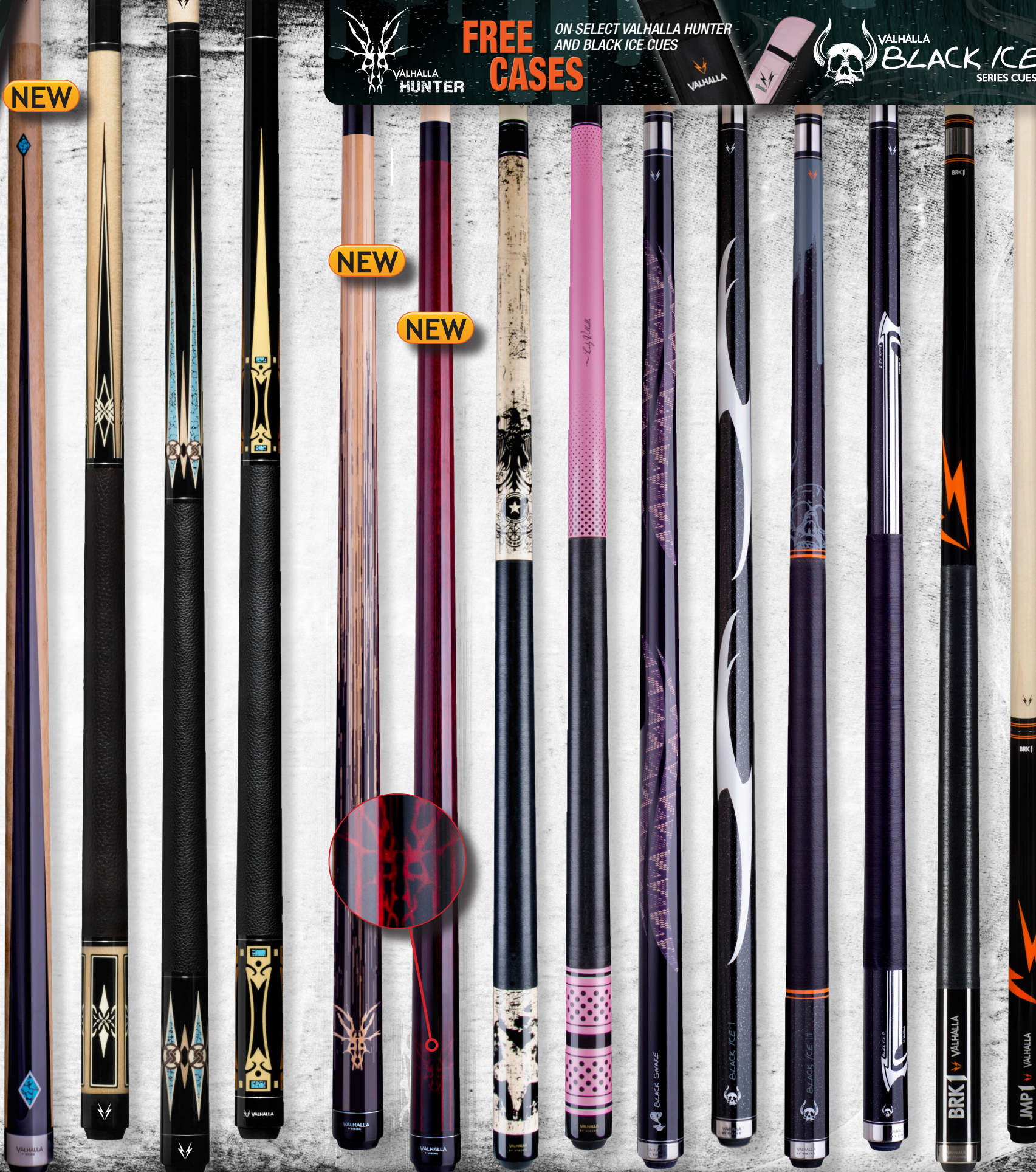
NEW

NEW

NEW

FREE CASES

ON SELECT VALHALLA HUNTER AND BLACK ICE CUES



NEW! VAL-HRD | \$129.99 **FREE CASE**

Valhalla Crimson Hunter

Birdseye Maple Forearm/Sleeve | Red European Stain | High Impact Ferrule | Original Custom Artwork | 5/16 x 18 Joint | Interchangeable Weight System | Premium Tip | Valhalla Soft Case

NEW! VAL-HNT | \$129.99 **FREE CASE**

Valhalla Natural Hunter

Birdseye Maple Forearm/Sleeve | Natural European Stain | High Impact Ferrule | Original Custom Artwork | 5/16 x 18 Joint | Interchangeable Weight System | Premium Tip | Valhalla Soft Case

VAL-GRNG | \$129.99 **FREE CASE**

Black Ice Grunge

Birdseye Maple Forearm/Sleeve | European Stain | High Impact Ferrule | Original Custom Artwork | 5/16 x 18 Joint | Irish Linen Wrap | Interchangeable Weight System | Premium Tip | Valhalla Soft Case

VAL-LADY | \$129.99 **FREE CASE**

Lady Valhalla

Michigan Maple Forearm/Sleeve | European Stain | High Impact Ferrule | Original Custom Artwork | 5/16 x 18 Joint | Irish Linen Wrap | Interchangeable Weight System | Premium Tip | Pink Valhalla Soft Case

VAL-SNAK | \$139.99 **FREE CASE**

Black Snake

Michigan Maple Forearm/Sleeve | European Stain | High Impact Ferrule | 3 Nickel Silver Rings | 5/16 x 18 Joint | Original Custom Artwork | Premium Tip | Stainless Steel Butt & Joint | Interchangeable Weight System | Valhalla Soft Case

VAL-ICE1 | \$159.99 **FREE CASE**

Black Ice I

Michigan Maple Forearm/Sleeve | European Stain | High Impact Ferrule | 3 Nickel Silver Rings | 5/16 x 18 Joint | Premium Tip | Stainless Steel Butt & Joint | Interchangeable Weight System | Valhalla Soft Case

VAL-ICE2 | \$159.99 **FREE CASE**

Black Ice II

Michigan Maple Forearm/Sleeve | European Stain | High Impact Ferrule | 3 Nickel Silver Rings | 5/16 x 18 Joint | Original Custom Artwork | Interchangeable Weight System | Irish Linen Wrap | Premium Tip | Stainless Steel Butt & Joint | Valhalla Soft Case

VAL-ICE3 | \$159.99 **FREE CASE**

Black Ice III

Michigan Maple Forearm/Sleeve | European Stain | High Impact Ferrule | 3 Nickel Silver Rings | 5/16 x 18 Joint | Original Custom Artwork | Interchangeable Weight System | Irish Linen Wrap | Premium Tip | Stainless Steel Butt & Joint | Valhalla Soft Case

VAL-BRK1 | \$139.99 **FREE CASE**

Black Ice BRK-1 Break Cue

Michigan Maple Forearm/Sleeve | European Stain | High Impact Ferrule | Irish Linen Wrap | 5/16 x 18 Joint | Interchangeable Weight System | Stainless Steel Butt & Joint | Premium Extra Hard Tip | Valhalla Soft Case

VAL-JMP1 | \$99.99

Black Ice JMP-1 Jump Cue

Michigan Maple Forearm/Sleeve | European Stain | High Impact Ferrule | Strong Taper | 5/16 x 18 Joint | Interchangeable Weight System | Premium Tip

VAL-045 | \$199.99
 Michigan Maple Forearm | Soft-Tech Nano Technology Wrap with Carbon Fiber Look | Black High Impact Butt & Joint | 16 West African ZebraWood Inlays | High Impact Ferrule | 4 Nickel Silver Rings | Piloted Quick Release Joint | Premium Tip | Viking Weight Bolt System

VAL-044 | \$279.99
 Birdseye Maple Forearm | 4 Premium Bocote Inlay Points | 4 West African ZebraWood Sleeve Inlays | 8 ZebraWood & Bocote Rings | Irish Linen Wrap | 5/16 x 18 Joint | High Impact Ferrule | Premium Tip | Interchangeable Weight System

VAL-043 | \$259.99
 Birdseye Maple Forearm | 3 Rengas Tigerwood Inlay Points | 6 Mother of Pearl Inlays | 2 Rengas Rings on Sleeve | Irish Linen Wrap | High Impact Ferrule | 2 Rengas Joint Rings | 5/16 x 18 Joint | Premium Tip | Interchangeable Weight System

VAL-042 | \$249.99
 Premium Rosewood Forearm/Sleeve | 4 Premium Bocote/Birdseye Maple Inlay Points | 4 Bocote/Maple Rings on Sleeve | Irish Linen Wrap | High Impact Ferrule | 2 Bocote Joint Rings | 5/16 x 18 Joint | Interchangeable Weight System | Premium Tip

VAL-041 | \$229.99
 Birdseye Maple Forearm/Sleeve | 4 Birdseye Maple Inlay Points | 2 Exotic Hardwood Rings on Sleeve | Irish Linen Wrap | High Impact Ferrule | 2 Hardwood Joint Rings | 5/16 x 18 Joint | Interchangeable Weight System | Premium Tip

VAL-040 | \$219.99
 Premium Rosewood Forearm/Sleeve | 4 Birdseye Maple Inlay Points | Birdseye Maple Ring | Irish Linen Wrap | High Impact Ferrule | 2 Rosewood Joint Rings | Premium Tip | 5/16 x 18 Joint | Interchangeable Weight System

VAL-039 | \$189.99
 Birdseye Maple Forearm/Sleeve | 4 African Padauk Inlay Points | 12 Padauk Sleeve Inlays | Irish Linen Wrap | Stainless Steel Butt & Joint | High Impact Ferrule | 5/16 x 18 Joint | Interchangeable Weight System | Premium Tip

VAL-038 | \$189.99
 Birdseye Maple Forearm | 4 Rengas Tigerwood Inlay Points | 4 Rengas Sleeve Inlays | High Impact Ferrule | Irish Linen Wrap | Stainless Steel Butt & Joint | Premium Tip | 5/16 x 18 Joint | Interchangeable Weight System

VAL-036 | \$189.99
 Birdseye Maple Forearm | 6 African Padauk Inlay Points | 6 Padauk Sleeve Inlays | Irish Linen Wrap | High Impact Ferrule | Stainless Steel Butt & Joint | 5/16 x 18 Joint | Interchangeable Weight System | Premium Tip

VAL-034 | \$199.99
 Birdseye Maple Forearm/Sleeve | 10 Point Transfers | Irish Linen Wrap | 5 White Pearl Rings | High Impact Ferrule | 10 Nickel Silver Rings | Premium Tip | 5/16 x 18 Joint | Interchangeable Weight System



VAL-030 | \$179.99
 Hard Rock Maple Forearm | Soft-Tech Nano Technology Wrap | Stainless Steel Butt & Joint | High Impact Ferrule | 2 Nickel Silver Rings | 5/16 x 18 Joint | Interchangeable Weight System | Premium Tip

VAL-029 | \$179.99
 Premium Bocote Forearm & Sleeve | 5 Sets of Index Rings | Irish Linen Wrap | High Impact Ferrule | 10 Nickel Silver Rings | 5/16 x 18 Joint | Premium Tip | Interchangeable Weight System

VAL-028 | \$179.99
 Premium Rosewood Forearm & Sleeve | 5 Sets of Index Rings | Irish Linen Wrap | High Impact Ferrule | 10 Nickel Silver Rings | 5/16 x 18 Joint | Premium Tip | Interchangeable Weight System

VAL-026 | \$159.99
 Birdseye Maple Forearm/Sleeve | 5 Point Transfers | 2 Blue Pearl Rings | Linen Wrap | High Impact Ferrule | 6 Nickel Silver Rings | 5/16 x 18 Joint | Interchangeable Weight System | Premium Tip

VAL-024 | \$159.99
 Birdseye Maple Forearm/Sleeve | 10 Point Transfers | European Stain | White Pearl Ring | Irish Linen Wrap | High Impact Ferrule | 6 Nickel Silver Rings | 5/16 x 18 Joint | Interchangeable Weight System | Premium Tip

VAL-022 | \$149.99
 Rengas Tigerwood Forearm & Sleeve | 3 West African ZebraWood Rings | Irish Linen Wrap | High Impact Ferrule | 5/16 x 18 Joint | Premium Tip | Interchangeable Weight System

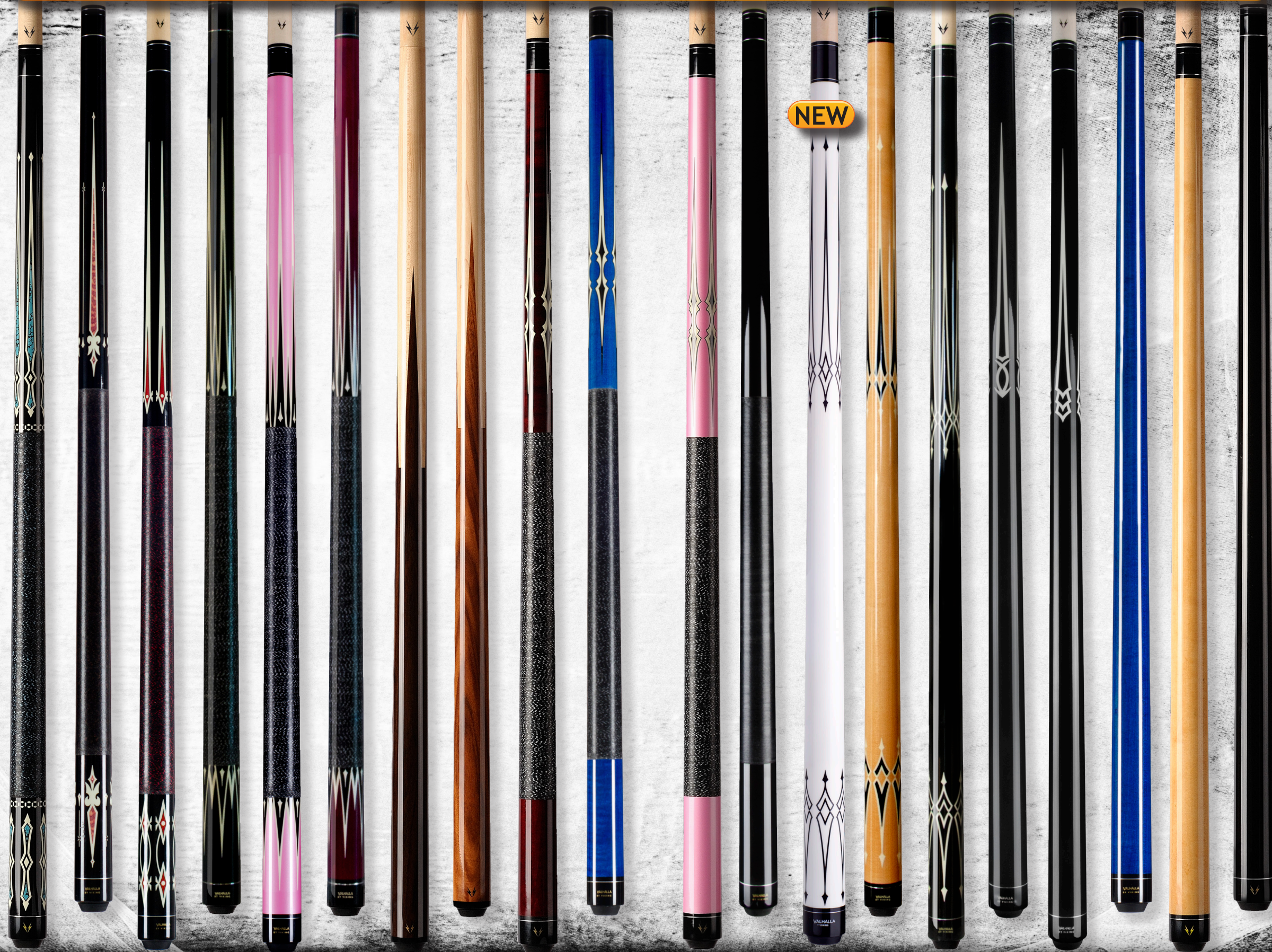
VAL-021 | \$139.99
 North American Hard Rock Maple | 10 Point Transfers | High Impact Ferrule | European Stain | Irish Linen Wrap | 5 Nickel Silver Rings | 5/16 x 18 Joint | Interchangeable Weight System | Premium Tip

VAL-020 | \$139.99
 North American Hard Rock Maple | 6 Turquoise/Birdseye Point Transfers | Irish Linen Wrap | High Impact Ferrule | 3 Nickel Silver Rings | 5/16 x 18 Joint | Interchangeable Weight System | Premium Tip

VAL-019 | \$139.99
 North American Hard Rock Maple | 6 4-Color Point Transfers | Irish Linen Wrap | High Impact Ferrule | Premium Tip | 3 Nickel Silver Rings | 5/16 x 18 Joint | Interchangeable Weight System

VAL-017 | \$109.99
 North American Hard Rock Maple with Exotic Hardwood | European Stain | 4 Splice Point Construction w/ Dual Veneers | High Impact Ferrule | Premium Tip | 5/16 x 18 Hustler Style Joint | Interchangeable Weight System

VAL-045 VAL-044 VAL-043 VAL-042 VAL-041 VAL-040 VAL-039 VAL-038 VAL-036 VAL-034 VAL-030 VAL-029 VAL-028 VAL-026 VAL-024 VAL-022 VAL-021 VAL-020 VAL-019 VAL-017



VAL-016 | \$99.99
Michigan Maple Forearm/Sleeve | 6 Turquoise Point Transfers | Irish Linen Wrap | High Impact Ferrule | 3 Nickel Silver Rings | 5/16 x 18 Joint | Interchangeable Weight System | Premium Tip

VAL-015 | \$99.99
Michigan Maple Forearm/Sleeve | Multi-color Point Transfers | Irish Linen Wrap | High Impact Ferrule | 3 Nickel Silver Rings | 5/16 x 18 Joint | Interchangeable Weight System | Premium Tip

VAL-014 | \$99.99
Michigan Maple Forearm/Sleeve | Multi-color Point Transfers | Irish Linen Wrap | High Impact Ferrule | 3 Nickel Silver Rings | 5/16 x 18 Joint | Interchangeable Weight System | Premium Tip

VAL-012 | \$89.99
Michigan Maple Forearm/Sleeve | Irish Linen Wrap | 16 Point Transfers | High Impact Ferrule | 3 Nickel Silver Rings | 5/16 x 18 Joint | Interchangeable Weight System | Premium Tip

VAL-011P | \$89.99
Michigan Maple Forearm/Sleeve | Irish Linen Wrap | 16 Point Transfers | High Impact Ferrule | 3 Nickel Silver Rings | 5/16 x 18 Joint | Interchangeable Weight System | Premium Tip

VAL-011 | \$89.99
North American Hard Rock Maple | Irish Linen Wrap | 16 Point Transfers | European Stain | High Impact Ferrule | 3 Nickel Silver Rings | 5/16 x 18 Joint | Interchangeable Weight System | Premium Tip

VAL-010 | \$79.99
North American Hard Rock Maple/Rosewood | 4 Splice Point Construction | High Impact Ferrule | 5/16 x 18 Hustler Style Joint | Interchangeable Weight System | Premium Tip

VAL-009 | \$74.99
North American Hard Rock Maple/Exotic Hardwood | 4 Splice Point Construction | High Impact Ferrule | 5/16 x 18 Hustler Style Joint | Interchangeable Weight System | Premium Tip

VAL-008 | \$69.99
Michigan Maple Forearm/Sleeve | Nylon Wrap | 5 Point Transfers | European Stain | High Impact Ferrule | 3 Nickel Silver Rings | 5/16 x 18 Joint | Interchangeable Weight System | Premium Tip

VAL-007 | \$69.99
Michigan Maple Forearm/Sleeve | Nylon Wrap | 5 Point Transfers | European Stain | High Impact Ferrule | 3 Nickel Silver Rings | 5/16 x 18 Joint | Interchangeable Weight System | Premium Tip

VAL-006 | \$69.99
Michigan Maple Forearm/Sleeve | Nylon Wrap | 5 Point Transfers | High Impact Ferrule | 3 Nickel Silver Rings | 5/16 x 18 Joint | Interchangeable Weight System | Premium Tip

VAL-102 | \$64.99
Michigan Maple Forearm/Sleeve | European Stain | High Impact Ferrule | Nylon Wrap | 3 Nickel Silver Rings | 5/16x18 Joint | Interchangeable Weight System | Premium Tip

NEW! VAL-005-W | \$59.99
Michigan Maple Forearm/Sleeve | 12 Point Transfers High & Low | European Stain | High Impact Ferrule | 3 Nickel Silver Rings | 5/16 x 18 Joint | Interchangeable Weight System | Premium Tip

VAL-005 | \$59.99
Michigan Maple Forearm/Sleeve | 12 Point Transfers High & Low | European Stain | High Impact Ferrule | 3 Nickel Silver Rings | 5/16 x 18 Joint | Interchangeable Weight System | Premium Tip

VAL-004 | \$59.99
Michigan Maple Forearm/Sleeve | 12 Point Transfers High & Low | High Impact Ferrule | 3 Nickel Silver Rings | 5/16 x 18 Joint | Interchangeable Weight System | Premium Tip

VAL-101 | \$54.99
Michigan Maple Forearm/Sleeve | European Stain | High Impact Ferrule | 3 Nickel Silver Rings | 5/16 x 18 Joint | Interchangeable Weight System | Premium Tip

VAL-100 | \$54.99
Michigan Maple Forearm/Sleeve | European Stain | High Impact Ferrule | 3 Nickel Silver Rings | 5/16 x 18 Joint | Interchangeable Weight System | Premium Tip

VAL-003 | \$49.99
Michigan Maple Forearm/Sleeve | European Stain | High Impact Ferrule | 3 Nickel Silver Rings | 5/16 x 18 Joint | Interchangeable Weight System | Premium Tip

VAL-002 | \$49.99
Michigan Maple Forearm/Sleeve | European Stain | High Impact Ferrule | 3 Nickel Silver Rings | 5/16 x 18 Joint | Interchangeable Weight System | Premium Tip

VAL-001 | \$49.99
Michigan Maple Forearm/Sleeve | European Stain | High Impact Ferrule | 3 Nickel Silver Rings | 5/16 x 18 Joint | Interchangeable Weight System | Premium Tip



VALHALLA

VAL-016 VAL-015 VAL-014 VAL-012 VAL-011P VAL-011 VAL-010 VAL-009 VAL-008 VAL-007 VAL-006 VAL-102 VAL-005W VAL-005 VAL-004 VAL-101 VAL-100 VAL-003 VAL-002 VAL-001



ALL AMERICAN PERFORMANCE

EXACT SHOT[®]

- Signature Sightlines
- eX-Core[®] Construction
- Kamui[®] Black Soft Tip
- Limited Lifetime Warranty
- 100% Made in the USA

XRZR

VIKING EXACTSHOT RZR CUE

featuring the
NEW Viking eXactShot[®]
Pure Performance Shaft

EXACT SHOT BY VIKING

- Reactive ViKORE[®] Center
- Softouch[®] Dampening Technology
- Viking's Indestructible Ferrule
- Lifetime Warranty, including workmanship

ViKORE
AMERICAN PERFORMANCE
The Viking Engineered ViKORE[®] Performance Shaft



ViKORE

AMERICAN PERFORMANCE

The Viking Engineered
ViKORE[®] Performance Shaft