



Since 1965

2012

www.vikingcue.com

Viking History

At Viking Cues, we know that better cues lead to better games. Over the years, Viking has become recognized as the leading cue maker in the industry. Our reputation is owed to the superior quality and craftsmanship of our products. Because of our focus on making great playing cues and our time-honored tradition in the billiards world, Viking's reputation continues to be the industry leader.

When it comes to making great cues, Viking will always remain vigorously committed to excellence, innovation and quality — some of our craftsmen have been with us for over 30 years, and we plan to keep it that way. But there's a lot more in store. In the years ahead, Viking will be ramping up its capabilities to stay positioned as the absolute top-of-the-line cuemaker in the industry. We're taking on a new direction while staying true to our name by investing in cutting-edge technology that will allow our cues to perform better than ever. On top of that, we're introducing innovative new products and accessories to add a whole new dimension to your playing experience.

Let's put it this way — we're racking up for a fresh break. Our game is about to get a lot more interesting, and we're more than excited to share what we've got.



Viking Design

"Viking innovation leads the way."

A Viking cue's exclusive finishing technique, custom SUPER ferrule, incredibly precise inlays, innovative finger-splice construction and CNC-machined quick release joint translate into more accurate shots — and that means more games won. Whether you play casually or professionally, a Viking cue eliminates problems that can sabotage your game. When pride or money is on the line, a cue by Viking delivers the performance you need.



Viking Craftsmanship

"The cues you see come from another time, when cues were works of art."

If you wonder why yesterday's cues sometimes seem more inspired than today's, the answer is simple: it's a big industry, and for some manufacturers it's all too easy to pursue profits instead of staying true to the roots of the game. At Viking Cues, we take the opposite approach, creating timeless cues with a real feel for both classic and modern design. If you want a cue with impeccable performance and exquisite style, Viking is the name.



Viking Performance

"Legendary craftsmanship, futuristic performance."

At Viking, we believe that craftsmanship and performance go hand in hand. That explains our obsession with the little things — especially when it comes to the cutting-edge, game-winning technology that goes into every Viking pool cue. After all, you can't look stylish when you're missing shots.



Two Feather Designs

"Master Cue Designer Anthony 'Two Feather' Squadroni."

Viking Cue is pleased to announce our new Master Cue Designer Anthony 'Two Feather' Squadroni. Anthony/Two-Feather has been designing pool cues for 20 years. He has worked with many of the top custom cue makers over the years and is now designing exclusively for Viking. His work is inspired by his Native American Heritage and his award winning cue designs incorporate Native storytelling and his love for the game of billiards.





GRAND ELITE

COLLECTION

*"Anthony Two Feather
draws from his third eye
— his heart."*

Tom Henerix, Author of 'Legends Fade'

Two Feather
CUE DESIGNS



ELITE

COLLECTION

*"Each Two Feather cue is
crafted with the finest exotic
materials. Every detail is
touched by our craftsmen
and each feature is expressed
with Two Feather's distinctive
artisan aesthetic. They are
simply the ultimate cues:
Exquisitely refined and truly
exceptional."*

TWO FEATHERS CUES

A Coyote Trickster *By Two Feather*

In Native American myth, the coyote is the Great Game Player, known for having fun and playing games... The six (6) arrow points represent Native Americans.

5/16 x 18 Joint | Interchangeable Weight System | Premium Tip | Highly-figured Birdseye Maple forearm | Six (6) West African Ebony points | West African Ebony butt | Genuine Ivory ring on sleeve (Grand Elite Edition) | Recon Ivory ring on sleeve (Elite Edition) | Exclusive Two Feather Design | Everest laminated tip | V PRO shaft | Genuine Ivory ferrule (Grand Elite Edition) | Viking SUPER ferrule | Viking Quick Release joint | Lifetime Warranty, including warpage

\$695.00 GRAND (100 Cues*) \$595.00 ELITE (300 Cues*)

B Moon Shadow *By Two Feather*

Native Americans would tell stories to their children about the "Skin Walkers", who moved in the shadows of the night while kicking up moon dust to frighten them. The Shadows of the Night were legendary boogie men in Native American culture.

Highly-figured Birdseye Maple forearm and sleeve | 12 Genuine Ivory inlays (Grand Elite Edition) | Recon ivory (Elite Edition) | 38 total inlays | Six (6) West African Ebony & Genuine Turquoise points | Six (6) Floating West African Ebony & Genuine Turquoise points | Recon Ebony ring on sleeve | Birdseye maple butt cap | Exclusive Two Feather Design | Everest laminated tip | V PRO shaft | Genuine Ivory ferrule (Grand Elite Edition) | Viking SUPER ferrule | Viking Quick Release joint | Lifetime Warranty, including warpage

\$1695.00 GRAND (50 Cues*) \$1395.00 ELITE (150 Cues*)

C Anasazi: The Ancient Ones *By Two Feather*

The word "Anasazi" is a American Indian civilization and culture that existed from about 1200 B.C. to A.D. 1300. The ivory depicts the Anasazi, the long 'spears' depict the road to Chaco Canyon and the sleeve inlays depict the pueblos built by this tribe.

Highly-figured Birdseye Maple forearm and sleeve | 12 Genuine Ivory inlays (Grand Elite Edition) | Recon ivory (Elite Edition) | 78 total inlays | Six (6) Birdseye Maple and Genuine Turquoise points | 42 sleeve inlays of West African Ebony & Turquoise | Six (6) silver rings | Exclusive Two Feather Design | Everest laminated tip | V PRO shaft | Genuine Ivory ferrule (Grand Elite Edition) | Viking SUPER ferrule | Viking Quick Release joint | Embossed leather wrap | Lifetime Warranty, including warpage

\$1795.00 GRAND (50 Cues*) \$1495.00 ELITE (150 Cues*)

D Four Corners *By Two Feather*

Four Corners: Fire, rock, water, sky represent the sacred earth. These are the four classical elements to ancient Native American philosophy about which life would not be possible.

Highly-figured Birdseye Maple & West African Ebony forearm and sleeve | 20 Genuine Ivory diamond shape inlays (Grand Elite Edition) | 20 Genuine Turquoise diamond shape inlays (Elite Edition) | 116 total inlays | Five (5) Birdseye Maple and Genuine Turquoise points | 90 amazing sleeve inlays | SiWx (6) silver rings | Exclusive Two Feather Design | Everest laminated tip | V PRO shaft | Genuine Ivory ferrule (Grand Elite Edition) | Viking SUPER ferrule | Viking Quick Release joint | Lifetime Warranty, including warpage

\$2400.00 GRAND (25 Cues*) \$1995.00 ELITE (100 Cues*)

E Warrior Way *By Two Feather*

The Warrior Way tells of the epic battle between races and the ultimate fate of the Native People. The cue beautifully depicts the native land, the battle, the native people, the reservation road, the native weapons, the long knives and coming of the white man.

Highly-figured Birdseye Maple & West African Ebony forearm and sleeve | 12 Genuine Turquoise diamond shape inlays | 60 total inlays | Six (6) Ivory and Genuine Turquoise points (Grand Elite Edition) *also available with Lace wood or Vermillion inlays | Six (6) recon ivory and Genuine Turquoise points (Elite Edition) *also available with Lace wood or Vermillion inlays | Six (6) Genuine Turquoise and Ebony shaft inlays | Exclusive Two Feather Design | Everest laminated tip | V PRO shaft | Genuine Ivory ferrule (Grand Elite Edition) | Viking SUPER ferrule | Viking Quick Release joint | Lifetime Warranty, including warpage

\$3595.00 GRAND (10 Cues*) \$2150.00 ELITE (50 Cues*)

* Represents the total number of cues that will be hand-crafted by Viking Cue

A

B

C

D

E

V PRO SERIES

V174 | \$1,539

A rare blend of art and performance.

Birdseye Maple Forearm | 24 South American Shakewood Mirrored High & Low Points | 90 Incredible Shakewood, West African Ebony, Turquoise & Recon Ivory Inlays | 3 Maple Rings | Everest® Laminated Tip | V PRO Shaft | Viking Quick Release Joint | Viking SUPER Ferrule

V173 | \$1,469

Built to a higher standard.

Birdseye Maple Forearm | 5 West African Zebrawood Floating Points | 80 Amazing West African Ebony & Zebrawood Inlays | 3 Maple Rings | Everest® Laminated Tip | V PRO Shaft | Viking Quick Release Joint | Viking SUPER Ferrule

V172 | \$1,399

Created to evoke your emotions.

Birdseye Maple Forearm | 16 East Indian Rosewood & Recon Ivory Mirrored High & Low Points | Intricate CNC Scrimshaw Design | Everest® Laminated Tip | V PRO Shaft | Viking Quick Release Joint | Viking SUPER Ferrule

V171 | \$1,249

Excite your soul.

Birdseye Maple Forearm | 6 Premium Pearl Points | Premium Pearl Sleeve & Butt Cap with Intricate CNC Scrimshaw Design | Pearl Joint Rings with Scrimshaw | Everest® Laminated Tip | V PRO Shaft | Viking Quick Release Joint | Viking SUPER Ferrule | Double-Pressed Irish Linen Wrap

V170 | \$1,069

Stir your senses.

Birdseye Maple Forearm | 16 West African Ebony Mirrored High & Low Points | 24 Turquoise & West African Zebrawood Inlays | Everest® Laminated Tip | V PRO Shaft | Viking Quick Release Joint | Viking SUPER Ferrule

V169 | \$969

Soulful art.

Birdseye Maple & East Indian Rosewood Forearm | Rare 4th Axis Machining | 2 Piece Spliced Construction | 4 Maple Viking Logo Inlays | Everest® Laminated Tip | V PRO Shaft | Viking Quick Release Joint | Viking SUPER Ferrule

V168 | \$939

Crafting the smallest detail.

West African Ebony Forearm & Sleeve | 4 Central American Cocobolo & Birdseye Maple Floating Points | 12 Sleeve Inlays | 3 Sets of Index Rings | Everest® Laminated Tip | V PRO Shaft | Viking Quick Release Joint | Viking SUPER Ferrule | Double-Pressed Irish Linen Wrap



V174

V173

V172

V171

V170

V169

V168

**V167-BL** | \$909**Uncompromised artistry.**

Birdseye Maple Forearm & Sleeve | 40 Exquisite Premium Pearl & Recon Ebony Inlays | Everest® Laminated Tip
V PRO Shaft | Viking Quick Release Hustler Style Joint
Viking SUPER Ferrule

V167-WH | \$909**Uncompromised artistry.**

Birdseye Maple Forearm & Sleeve | 40 Exquisite Premium Pearl & Recon Ebony Inlays | Everest® Laminated Tip
V PRO Shaft | Viking Quick Release Hustler Style Joint
Viking SUPER Ferrule

V166 | \$899**Create desire.**

Birdseye Maple Forearm & Sleeve | 10 Mexican Bocote Floating Points | 30 Bocote and Birdseye Maple Sleeve Inlays | 40 Total Inlays | Everest® Laminated Tip | V PRO Shaft | Viking Quick Release Joint | Viking SUPER Ferrule
Premium Brown Leather

V165 | \$839**Bolder styling.**

West African Ebony Forearm & Sleeve | 4 Curly Maple, Mirror, Recon Ivory & Turquoise Floating Points | 56 Inlays
20 Turquoise, Maple, Recon Ebony Rings | Everest® Laminated Tip | V PRO Shaft | Viking Quick Release Joint
Viking SUPER Ferrule | Double-Pressed Irish Linen Wrap

V164 | \$799**Work of art.**

Birdseye Maple Forearm | West African Ebony Sleeve
4 Ebony, New Guinea Vermilion, Maple & Recon Ivory Points | 58 Inlays | 12 Vermilion, Maple & Ebony Rings
Everest® Laminated Tip | V PRO Shaft | Viking Quick Release Joint | Viking SUPER Ferrule
Double-Pressed Irish Linen Wrap

V163 | \$769**Push the envelope.**

West African Ebony Forearm & Sleeve | 4 Malachite, Recon Ivory & Mirror Floating Points | 32 Malachite, Recon Ivory & Mirror Sleeve Inlays | 4 Malachite Rings | Everest® Laminated Tip | V PRO Shaft | Viking Quick Release Joint
Viking SUPER Ferrule | Double-Pressed Irish Linen Wrap

V162 | \$739**Dramatic design.**

West African Ebony Forearm | 3 Premium Pearl Scrimshaw Floating Points | Pearl Sleeve w/Intricate CNC Scrimshaw Design | 3 New Guinea Vermillion Rings | Everest® Laminated Tip | V PRO Shaft | Viking Quick Release Joint
Viking SUPER Ferrule | Double-Pressed Irish Linen Wrap



167-BL

V167-WH

V166

V165

V164

V163

V162

V161

V160

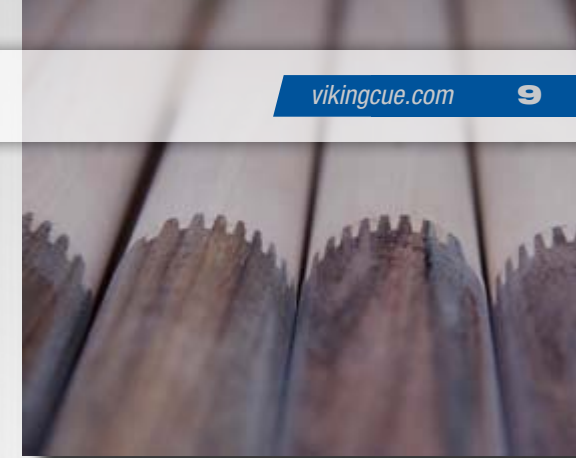
V159

V158

V157

V156

V155

**V161** | \$699**Precision personified.**

Central American Cocobolo Forearm & Sleeve | 7 Mirror & African Holly Floating Points | 107 Amazing Inlays
Everest® Laminated Tip | V PRO Shaft | Viking Quick Release Joint | Viking SUPER Ferrule | Double-Pressed Irish Linen Wrap

V160 | \$669**Flawless craftsmanship.**

Birdseye Maple Forearm & Sleeve
56 Extraordinary West African Ebony & New Guinea Vermilion Inlays | 3 Maple Rings | Everest® Laminated Tip
V PRO Shaft | Viking Quick Release Joint
Viking SUPER Ferrule

V159 | \$639**Exquisite workmanship.**

West African Ebony Forearm & Sleeve
4 Brazilian Tulipwood, Central American Cocobolo & Birdseye Maple Points | 48 Inlays
2 Maple Rings | Everest® Laminated Tip | V PRO Shaft
Viking Quick Release Joint | Viking SUPER Ferrule
Double-Pressed Irish Linen Wrap

V158 | \$619**Pinnacle of design.**

Central American Cocobolo Forearm & Sleeve | 5 Recon Ivory Points | 40 Mexican Bocote, Recon Ivory & Ebony Inlays | 11 Cocobolo, Maple & Recon Ebony Rings | Everest® Laminated Tip | V PRO Shaft | Viking Quick Release Joint | Viking SUPER Ferrule
Double-Pressed Irish Linen Wrap

V157 | \$599**Effortless beauty.**

West African Ebony Forearm & Sleeve | 4 Mexican Bocote & Recon Ivory Floating Points | 40 Inlays
20 Bocote, Ebony & Recon Ivory Rings | Everest® Laminated Tip | V PRO Shaft | Viking Quick Release Joint
Viking SUPER Ferrule | Double-Pressed Irish Linen Wrap

V156 | \$579**Experience the exceptional.**

West African Ebony Forearm | 4 Malachite & Recon Ivory Floating Points | 48 Inlays | 4 Rings | Everest® Laminated Tip | V PRO Shaft | Viking Quick Release Joint | Viking SUPER Ferrule | Double-Pressed Irish Linen Wrap

V155 | \$569**Dynamic design.**

Birdseye Maple Forearm & Sleeve | 4 Malachite, Recon Ebony & Mirror Floating Points | 56 Inlays | Everest® Laminated Tip | V PRO Shaft | Viking Quick Release Joint
Viking SUPER Ferrule | Double-Pressed Irish Linen Wrap



V154 | \$569

Beautifully crafted.

Birdseye Maple Forearm | 6 Premium Pearl Floating Points | 6 Pearl Sleeve Inlays | 4 Rings | Everest® Laminated Tip | V PRO Shaft | Viking Quick Release Joint | Viking SUPER Ferrule | Double-Pressed Irish Linen Wrap

V153 | \$569

Timeless appeal.

Birdseye Maple Forearm & Sleeve | 4 Premium Pearl & Mirror Points | Pearl & Mirror Sleeve Inlays | Everest® Laminated Tip | V PRO Shaft | Viking Quick Release Joint | Viking SUPER Ferrule | Double-Pressed Irish Linen Wrap

V152 | \$559

Capture your emotions.

West African Ebony Forearm | 4 Intricate, Premium Pearl Floating Points | White Pearl Sleeve Inlays | 4 Sets of Index Rings | Everest® Laminated Tip | V PRO Shaft | Viking Quick Release Joint | Viking SUPER Ferrule | Double-Pressed Irish Linen Wrap

V151 | \$559

Exceed your expectation.

Birdseye Maple Forearm & Sleeve | 6 South American Snakewood Floating Points | 36 Snakewood & West African Zebrawood Inlays | Everest® Laminated Tip | V PRO Shaft | Viking Quick Release Joint | Viking SUPER Ferrule | Double-Pressed Irish Linen Wrap

V150 | \$549

Exceptional quality.

Birdseye Maple Forearm & Sleeve | 6 Intricate Recon Ebony Floating Points | 6 Sleeve Inlays | Maple Rings | Everest® Laminated Tip | V PRO Shaft | Viking Quick Release Joint | Viking SUPER Ferrule | Double-Pressed Irish Linen Wrap

V149 | \$549

Innovative design.

Birdseye Maple Forearm & Sleeve | 4 New Guinea Vermillion, Recon Ebony & Ivory Floating Points | 80 Inlays | Vermillion & Recon Ivory Rings | Everest® Laminated Tip | V PRO Shaft | Viking Quick Release Joint | Viking SUPER Ferrule | Double-Pressed Irish Linen Wrap

V148 | \$539

A deep sense of style.

Birdseye Maple Forearm | 4 Recon Ebony & Mirror Points | 8 Mirror Sleeve Inlays | 4 Sets of Index Rings | Everest® Laminated Tip | V PRO Shaft | Viking Quick Release Joint | Viking SUPER Ferrule | Double-Pressed Irish Linen Wrap



V154

V153

V152

V151

V150

V149

V148

V147

V146

V145-WH

V145-BL

V144

V143

V142



V147 | \$539

Thoughtful engineering.

Birdseye Maple Forearm | 4 Turquoise & Mirror Points | 32 Inlays | 3 Sets of Index Rings | Everest® Laminated Tip | V PRO Shaft | Viking Quick Release Joint | Viking SUPER Ferrule | Double-Pressed Irish Linen Wrap

V146 | \$539

Graceful style.

West African Ebony Forearm & Sleeve | 5 West African Zebrawood Points | Zebrawood & Recon Ivory Inlays | Everest® Laminated Tip | V PRO Shaft | Viking Quick Release Joint | Viking SUPER Ferrule | Double-Pressed Irish Linen Wrap

V145-WH | \$529

Reward yourself.

West African Ebony Forearm & Sleeve | 4 Premium Pearl Points | 48 Inlays | 12 Pearl Rings | Pearl Butt Cap | Everest® Laminated Tip | V PRO Shaft | Viking Quick Release Joint | Viking SUPER Ferrule | Double-Pressed Irish Linen Wrap

V145-BL | \$529

Technical excellence.

West African Ebony Forearm & Sleeve | 4 Premium Pearl Points | 48 Inlays | 12 Pearl Rings | Pearl Butt Cap | Everest® Laminated Tip | V PRO Shaft | Viking Quick Release Joint | Viking SUPER Ferrule | Double-Pressed Irish Linen Wrap

V144 | \$519

Precision made craftsmanship.

West African Ebony Forearm & Sleeve | 4 New Guinea Vermillion & Premium Pearl & Mirror Points | 41 Inlays | 6 Vermillion & Pearl Rings | Everest® Laminated Tip | V PRO Shaft | Viking Quick Release Joint | Viking SUPER Ferrule | Double-Pressed Irish Linen Wrap

V143 | \$519

Visual energy.

Birdseye Maple Forearm | 4 Recon Ebony & Mirror Points | 32 Inlays | 12 Mirror Sleeve Inlays | Everest® Laminated Tip | V PRO Shaft | Viking Quick Release Joint | Viking SUPER Ferrule | Double-Pressed Irish Linen Wrap

V142 | \$519

Enticing blend of materials.

Birdseye Maple Forearm | 4 West African Zebrawood & Central American Cocobolo Points | 52 Inlays | 14 West African Ebony, Cocobolo & Zebrawood Rings | Everest® Laminated Tip | V PRO Shaft | Viking Quick Release Joint | Viking SUPER Ferrule | Double-Pressed Irish Linen Wrap



V141 | \$509

Commitment to excellence.

Birdseye Maple Forearm | 8 Recon Ebony Points w/ Premium Pearl Inlays | 36 Inlays | 4 Birdseye Maple Index Rings | Everest® Laminated Tip | V PRO Shaft | Viking Quick Release Joint | Viking SUPER Ferrule | Double-Pressed Irish Linen Wrap

V140 | \$509

Infuse your feelings.

West African Ebony Forearm & Sleeve | 10 Birdseye Maple Floating Points | 76 Inlays | Maple Rings | Everest® Laminated Tip | V PRO Shaft | Viking Quick Release Joint | Viking SUPER Ferrule | Double-Pressed Irish Linen Wrap

V139 | \$499

Command the table.

Birdseye Maple Forearm & Sleeve | 4 Premium Pearl & West African Zebrawood Floating Points | 76 Inlays | 4 Zebrawood & Pearl Rings | Everest® Laminated Tip | V PRO Shaft | Viking Quick Release Joint | Viking SUPER Ferrule | Double-Pressed Irish Linen Wrap

V138 | \$489

Rich craftsmanship and style.

East Indian Rosewood Forearm & Sleeve | 4 West African Zebrawood Points | 112 Inlays | 8 Premium Pearl Dots | Everest® Laminated Tip | V PRO Shaft | Viking Quick Release Joint | Viking SUPER Ferrule | Double-Pressed Irish Linen Wrap

V137 | \$489

Thoughtful details.

West African Ebony Forearm & Sleeve | 5 New Guinea Vermillion & Birdseye Maple Points | 50 Inlays | 6 Vermillion & Maple Rings | Everest® Laminated Tip | V PRO Shaft | Viking Quick Release Joint | Viking SUPER Ferrule | Double-Pressed Irish Linen Wrap

V136 | \$479

Make a statement.

East Indian Rosewood Forearm & Sleeve | 4 Australian Lace Wood & Birdseye Maple Floating Points | 16 Inlays | Everest® Laminated Tip | V PRO Shaft | Viking Quick Release Joint | Viking SUPER Ferrule | Double-Pressed Irish Linen Wrap

V135 | \$469

Refined excitement.

Curly Maple Forearm | West African Zebrawood Sleeve | 16 West African Ebony, West African Zebrawood & 4 sets of Birdseye Maple Rings | Everest® Laminated Tip | V PRO Shaft | Viking Quick Release Joint | Viking SUPER Ferrule | Double-Pressed Irish Linen Wrap



V141

V140

V139

V138

V137

V136

V135

V134

V133

V132

V131

V130

V129

V128



V134 | \$469

Crafting emotion.

Birdseye Forearm & Sleeve | 4 Points | 56 Central American Cocobolo & Recon Ebony Inlays | Everest® Laminated Tip | V PRO Shaft | Viking Quick Release Joint | Viking SUPER Ferrule | Double-Pressed Irish Linen Wrap

V133 | \$459

Inspired design.

Central American Cocobolo Forearm & Sleeve | 20 West African Ebony & Birdseye Maple Rings | Everest® Laminated Tip | V PRO Shaft | Viking Quick Release Joint | Viking SUPER Ferrule | Double-Pressed Irish Linen Wrap

V132 | \$459

Attention to detail.

West African Ebony Forearm & Sleeve | 4 Birdseye Maple Points | 25 Ebony, New Guinea Vermillion & Birdseye Maple Rings | Everest® Laminated Tip | V PRO Shaft | Viking Quick Release Joint | Viking SUPER Ferrule | Double-Pressed Irish Linen Wrap

V131 | \$449

Heightened performance.

Central American Cocobolo Forearm & Sleeve | 15 West African Ebony, West African Zebrawood & Birdseye Maple Rings | Everest® Laminated Tip | V PRO Shaft | Viking Quick Release Joint | Viking SUPER Ferrule | Double-Pressed Irish Linen Wrap

V130 | \$439

Make a lasting impression.

Birdseye Maple Forearm | West African Zebrawood Sleeve | 4 Zebrawood Points | 12 Central American Cocobolo & Birdseye Maple Rings | Everest® Laminated Tip | V PRO Shaft | Viking Quick Release Joint | Viking SUPER Ferrule | Double-Pressed Irish Linen Wrap

V129 | \$429

Refined simplicity.

Birdseye Maple Forearm & Sleeve | 3 Premium Pearl Points | 30 Inlays | Everest® Laminated Tip | V PRO Shaft | Viking Quick Release Joint | Viking SUPER Ferrule | Double-Pressed Irish Linen Wrap

V128 | \$419

More craftsmanship, more cue.

Birdseye Maple Forearm & Sleeve | Ebony, Central American Cocobolo, Birdseye & West African Zebrawood Rings | 16 Total Rings | Everest® Laminated Tip | V PRO Shaft | Viking Quick Release Joint | Viking SUPER Ferrule | Double-Pressed Irish Linen Wrap



V127 | \$409

Dynamic design.

East Indian Rosewood Forearm & Sleeve | 15 Premium Pearl Inlays | 11 Pearl Rings | Pearl Butt Cap | Everest® Laminated Tip | V PRO Shaft | Viking Quick Release Joint | Viking SUPER Ferrule | Double-Pressed Irish Linen Wrap

V126 | \$399

Eager performance.

Birdseye Maple Forearm & Sleeve | 4 West African Zebrawood Floating Points | 8 Zebrawood Inlays | 3 Zebrawood Rings | Everest® Laminated Tip | V PRO Shaft | Viking Quick Release Joint | Viking SUPER Ferrule | Double-Pressed Irish Linen Wrap

V125 | \$389

Progressive thinking.

West African Ebony Forearm & Sleeve | 3 Sets of West African Zebrawood/Birdseye Maple/Ebony Rings | Everest® Laminated Tip | V PRO Shaft | Viking Quick Release Joint | Viking SUPER Ferrule | Double-Pressed Irish Linen Wrap

V124 | \$389

Compelling desirability.

West African Ebony Forearm & Sleeve | 3 Sets of Central American Cocobolo/Birdseye Maple/Ebony Rings | Everest® Laminated Tip | V PRO Shaft | Viking Quick Release Joint | Viking SUPER Ferrule | Double-Pressed Irish Linen Wrap

V123-WH | \$379

Magnetic attraction.

Birdseye Maple Forearm | Premium Pearl Sleeve | 4 Pearl Points | Everest® Laminated Tip | V PRO Shaft | Viking Quick Release Joint | Viking SUPER Ferrule | Double-Pressed Irish Linen Wrap

V123-BL | \$379

Magnetic attraction.

Birdseye Maple Forearm | Premium Pearl Sleeve | 4 Pearl Points | Everest® Laminated Tip | V PRO Shaft | Viking Quick Release Joint | Viking SUPER Ferrule | Double-Pressed Irish Linen Wrap

V122 | \$359

Human innovation.

Central American Bocote Forearm & Sleeve | 3 Sets of Mirror/Maple Index Rings | Everest® Laminated Tip | V PRO Shaft | Viking Quick Release Joint | Viking SUPER Ferrule | Premium Black Ostrich Leather Wrap



V127

V126

V125

V124

V123-WH

V123-BL

V122

V121

V120

V119

V118

V117-CF

V117-NT

V116



V121 | \$359

Built to perform.

Central American Cocobolo Forearm & Sleeve | 3 Sets of Mirror/Maple Index Rings | Everest® Laminated Tip | V PRO Shaft | Viking Quick Release Joint | Viking SUPER Ferrule | Premium Black Leather Wrap

V120 | \$339

Unparalleled performance.

Birdseye Maple Forearm/Sleeve | 4 African Wenge Points | Everest® Laminated Tip | V PRO Shaft | Viking Quick Release Joint | Grain Enhancement Stain | Viking SUPER Ferrule | Double-Pressed Irish Linen Wrap

V119 | \$339

Power and performance.

Birdseye Maple Forearm | Central American Cocobolo Sleeve | Cocobolo, Maple & Recon Ivory Rings | 13 Total Rings | Everest® Laminated Tip | V PRO Shaft | Viking Quick Release Joint | Viking SUPER Ferrule | Double-Pressed Irish Linen Wrap

V118 | \$339

Demand precision.

Birdseye Maple Forearm/Sleeve | 3 Central American Cocobolo Rings | 16 Total Rings | Everest® Laminated Tip | V PRO Shaft | Viking Quick Release Joint | Viking SUPER Ferrule | Double-Pressed Irish Linen Wrap

V117-CF | \$329

Aggressive performance.

Birdseye Maple Forearm/Sleeve | 4 Points | Everest® Laminated Tip | V PRO Shaft | Viking Hustler Style Quick Release Joint | Grain Enhancement Stain | Viking SUPER Ferrule

V117-NT | \$329

Aggressive performance.

Birdseye Maple Forearm/Sleeve | 4 Points | Everest® Laminated Tip | V PRO Shaft | Viking Hustler Style Quick Release Joint | Grain Enhancement Stain | Viking SUPER Ferrule

V116 | \$319

Breathtaking power and precision.

Birdseye Maple Forearm/Sleeve | 32 Pearl & Recon Inlays on Sleeve | 2 Premium Pearl Rings | Everest® Laminated Tip | V PRO Shaft | Viking Quick Release Joint | Viking SUPER Ferrule | Double-Pressed Irish Linen Wrap



V115 V114-BL V114-WH V113 V112 V111-GD V111-WH V110-BL V110-CF V109 V108 V107 V106 V105-BR V105-RD V105-WH

V115 | \$309
Assertive design.
 East Indian Rosewood Forearm/Sleeve | 4 Rosewood Points w/ Maple Veneer | Birdseye Maple Butt Cap
 Everest® Laminated Tip | V PRO Shaft | Viking Quick Release Joint | Viking SUPER Ferrule
 Double-Pressed Irish Linen Wrap

V114-BL | \$299
Rich colors.
 Birdseye Maple Forearm/Sleeve | 7 Premium Pearl Rings
 Everest® Laminated Tip | V PRO Shaft | Viking Quick Release Joint | Grain Enhancement Stain | Viking SUPER Ferrule | Double-Pressed Irish Linen Wrap

V114-WH | \$299
Rich colors.
 Birdseye Maple Forearm/Sleeve | 7 Premium Pearl Rings
 Everest® Laminated Tip | V PRO Shaft | Viking Quick Release Joint | Grain Enhancement Stain | Viking SUPER Ferrule | Double-Pressed Irish Linen Wrap

V113 | \$289
Smooth refinement.
 Birdseye Maple Forearm/Sleeve | 8 West African Ebony Rings | 4 Central American Cocobolo Rings | Everest® Laminated Tip | V PRO Shaft | Viking Quick Release Joint
 Viking SUPER Ferrule | Double-Pressed Irish Linen Wrap

V112 | \$289
Simplest is best.
 Birdseye Maple Forearm/Sleeve | 4 West African Ebony Rings | 9 Central American Cocobolo & Maple Rings
 Everest® Laminated Tip | V PRO Shaft | Viking Quick Release Joint | Viking SUPER Ferrule
 Double-Pressed Irish Linen Wrap

V111-GD | \$279
Energize yourself.
 Birdseye Maple Forearm/Sleeve | 4 Premium Pearl Rings
 Everest® Laminated Tip | V PRO Shaft
 Viking Quick Release Joint | Grain Enhancement Stain
 Viking SUPER Ferrule | Double-Pressed Irish Linen Wrap

V111-WH | \$279
Energize yourself.
 Birdseye Maple Forearm/Sleeve | 4 Premium Pearl Rings
 Everest® Laminated Tip | V PRO Shaft
 Viking Quick Release Joint | Grain Enhancement Stain
 Viking SUPER Ferrule | Double-Pressed Irish Linen Wrap

V110-BL | \$269
True refinement.
 Birdseye Maple Forearm/Sleeve | 3 Sets of Index Rings
 Everest® Laminated Tip | V PRO Shaft | Viking Quick Release Joint | Grain Enhancement Stain
 Viking SUPER Ferrule | Double-Pressed Irish Linen Wrap



V110-CF | \$269
True refinement.
 Birdseye Maple Forearm/Sleeve | 3 Sets of Index Rings | Everest® Laminated Tip | V PRO Shaft
 Viking Quick Release Joint | Grain Enhancement Stain
 Viking SUPER Ferrule | Double-Pressed Irish Linen Wrap

V109 | \$269
Infusing the thrill.
 Birdseye Maple Forearm/Sleeve | 6 Maple Rings
 3 Premium Pearl Rings | Everest® Laminated Tip
 V PRO Shaft | Viking Quick Release Joint | Grain Enhancement Stain | Viking SUPER Ferrule
 Double-Pressed Irish Linen Wrap

V108 | \$269
Surge of exhilaration.
 East Indian Rosewood Forearm/Sleeve | 3 Central American Bocote Rings | 6 Premium Pearl Rings
 Everest® Laminated Tip | V PRO Shaft | Viking Quick Release Joint | Viking SUPER Ferrule
 Double-Pressed Irish Linen Wrap

V107 | \$259
Express yourself.
 Birdseye Maple Forearm/Sleeve | 3 Sets of Box Index Rings (27 Inlays) | Everest® Laminated Tip | V PRO Shaft
 Viking Quick Release Joint | Viking SUPER Ferrule
 Double-Pressed Irish Linen Wrap

V106 | \$259
Play better.
 Birdseye Maple Forearm/Sleeve | Everest® Laminated Tip | V PRO Shaft | Viking Quick Release Joint
 12 Rings | Grain Enhancement Stain | Viking SUPER Ferrule | Double-Pressed Irish Linen Wrap

V105-BR | \$249
Make a statement.
 Birdseye Maple Forearm | Everest® Laminated Tip
 V PRO Shaft | Viking Quick Release Joint
 Premium Pearl Sleeve | Grain Enhancement Stain
 Viking SUPER Ferrule | Double-Pressed Irish Linen Wrap

V105-RD | \$249
Make a statement.
 Birdseye Maple Forearm | Everest® Laminated Tip
 V PRO Shaft | Viking Quick Release Joint | Premium Pearl Sleeve | Grain Enhancement Stain
 Viking SUPER Ferrule | Double-Pressed Irish Linen Wrap

V105-WH | \$249
Make a statement.
 Birdseye Maple Forearm | Everest® Laminated Tip
 V PRO Shaft | Viking Quick Release Joint | Premium Pearl Sleeve | Grain Enhancement Stain
 Viking SUPER Ferrule | Double-Pressed Irish Linen Wrap



V105-SM

V105-BL

V104-NT

V104-RD

V104-BL

V103-OR

V103-GR

V103-SM

V103-CF

V102-BK

V102-PR

V102-CF

V102-RD

V101-RD

V101-PK

V105-SM | \$249

Make a statement.

Birdseye Maple Forearm | Everest® Laminated Tip
V PRO Shaft | Viking Quick Release Joint
Premium Pearl Sleeve | Grain Enhancement Stain
Viking SUPER Ferrule | Double-Pressed Irish Linen Wrap

V105-BL | \$249

Make a statement.

Birdseye Maple Forearm | Everest® Laminated Tip
V PRO Shaft | Viking Quick Release Joint
Premium Pearl Sleeve | Grain Enhancement Stain
Viking SUPER Ferrule | Double-Pressed Irish Linen Wrap

V104-NT | \$229

Classic refinement.

Birdseye Maple Forearm/Sleeve | Everest® Laminated Tip
V PRO Shaft | Viking Quick Release Joint
Grain Enhancement Stain | Maple Index Rings
Viking SUPER Ferrule | Double-Pressed Irish Linen Wrap

V104-RD | \$229

Classic refinement.

Birdseye Maple Forearm/Sleeve | Everest® Laminated Tip
V PRO Shaft | Viking Quick Release Joint
Grain Enhancement Stain | Maple Index Rings
Viking SUPER Ferrule | Double-Pressed Irish Linen Wrap

V104-BL | \$229

Classic refinement.

Birdseye Maple Forearm/Sleeve | Everest® Laminated Tip
V PRO Shaft | Viking Quick Release Joint
Grain Enhancement Stain | Maple Index Rings
Viking SUPER Ferrule | Double-Pressed Irish Linen Wrap

V103-OR | \$219

One cue, two stains, more value.

Rich Birdseye Maple | Everest® Laminated Tip | V PRO Shaft | Viking Quick Release Joint | Dual Grain Enhancement Stain | Viking SUPER Ferrule | Double-Pressed Irish Linen Wrap

V103-GR | \$219

One cue, two stains, more value.

Rich Birdseye Maple | Everest® Laminated Tip | V PRO Shaft | Viking Quick Release Joint | Dual Grain Enhancement Stain | Viking SUPER Ferrule | Double-Pressed Irish Linen Wrap



V103-SM | \$219

One cue, two stains, more value.

Rich Birdseye Maple | Everest® Laminated Tip | V PRO Shaft | Viking Quick Release Joint | Dual Grain Enhancement Stain | Viking SUPER Ferrule | Double-Pressed Irish Linen Wrap

V103-CF | \$219

One cue, two stains, more value.

Rich Birdseye Maple | Everest® Laminated Tip | V PRO Shaft | Viking Quick Release Joint | Dual Grain Enhancement Stain | Viking SUPER Ferrule | Double-Pressed Irish Linen Wrap

V102-BK | \$209

Play with conviction.

Birdseye Maple Forearm/Sleeve | Everest® Laminated Tip | V PRO Shaft | Viking Quick Release Joint | Grain Enhancement Stain | Viking SUPER Ferrule | Double-Pressed Irish Linen Wrap

V102-PR | \$209

Play with conviction.

Birdseye Maple Forearm/Sleeve | Everest® Laminated Tip | V PRO Shaft | Viking Quick Release Joint | Grain Enhancement Stain | Viking SUPER Ferrule | Double-Pressed Irish Linen Wrap

V102-CF | \$209

Play with conviction.

Birdseye Maple Forearm/Sleeve | Everest® Laminated Tip | V PRO Shaft | Viking Quick Release Joint | Grain Enhancement Stain | Viking SUPER Ferrule | Double-Pressed Irish Linen Wrap

V102-RD | \$209

Play with conviction.

Birdseye Maple Forearm/Sleeve | Everest® Laminated Tip | V PRO Shaft | Viking Quick Release Joint | Grain Enhancement Stain | Viking SUPER Ferrule | Double-Pressed Irish Linen Wrap

V101-RD | \$199

A timeless classic.

Birdseye Maple Forearm/Sleeve | Everest® Laminated Tip | V PRO Shaft | Viking Quick Release Joint | Grain Enhancement Stain | Viking SUPER Ferrule | Double-Pressed Irish Linen Wrap

V101-PK | \$199

A timeless classic.

Birdseye Maple Forearm/Sleeve | Everest® Laminated Tip | V PRO Shaft | Viking Quick Release Joint | Grain Enhancement Stain | Viking SUPER Ferrule | Double-Pressed Irish Linen Wrap



V101-BK | \$199

A timeless classic.

Birdseye Maple Forearm/Sleeve | Everest® Laminated Tip | V PRO Shaft | Viking Quick Release Joint
Grain Enhancement Stain | Viking SUPER Ferrule
Double-Pressed Irish Linen Wrap

V101-BL | \$199

A timeless classic.

Birdseye Maple Forearm/Sleeve | Everest® Laminated Tip | V PRO Shaft | Viking Quick Release Joint
Grain Enhancement Stain | Viking SUPER Ferrule
Double-Pressed Irish Linen Wrap

V101-NT | \$199

A timeless classic.

Birdseye Maple Forearm/Sleeve | Everest® Laminated Tip | V PRO Shaft | Viking Quick Release Joint
Grain Enhancement Stain | Viking SUPER Ferrule
Double-Pressed Irish Linen Wrap

V101-GR | \$199

A timeless classic.

Birdseye Maple Forearm/Sleeve | Everest® Laminated Tip | V PRO Shaft | Viking Quick Release Joint
Grain Enhancement Stain | Viking SUPER Ferrule
Double-Pressed Irish Linen Wrap

V101-SM | \$199

A timeless classic.

Birdseye Maple Forearm/Sleeve | Everest® Laminated Tip | V PRO Shaft | Viking Quick Release Joint
Grain Enhancement Stain | Viking SUPER Ferrule
Double-Pressed Irish Linen Wrap

V101-CF | \$199

A timeless classic.

Birdseye Maple Forearm/Sleeve | Everest® Laminated Tip | V PRO Shaft | Viking Quick Release Joint
Grain Enhancement Stain | Viking SUPER Ferrule
Double-Pressed Irish Linen Wrap

V100-BK | \$189

Bold and cool.

Birdseye Maple Forearm/Sleeve | Everest® Laminated Tip | V PRO Shaft | Viking Quick Release Joint | Grain Enhancement Stain | Viking SUPER Ferrule

V100-WH | \$189

An inspired combination of black and white.

Birdseye Maple Forearm/Sleeve | Everest® Laminated Tip | V PRO Shaft | Viking Quick Release Joint | Grain Enhancement Stain | Viking SUPER Ferrule



V101-BK

V101-BL

V101-NT

V101-GR

V101-SM

V101-CF

V100-BK

V100-WH

V175

V176

BREAK CUE

JUMP BREAK

JUMP / BREAK CUES

VAL-BRK1 | \$139.99

Balls will be Crushed.

North American Hard Rock Maple | High Impact Ferrule
Strong Taper | 5/16x18 Joint
Interchangeable Weight System
Premium Extra Hard Tip

VAL-JMP1 | \$99.99

Fearless Jump Cue

North American Hard Rock Maple | High Impact Ferrule
Strong Taper | 5/16x18 Joint
Interchangeable Weight System
Premium Tip

V175 | \$249

**FAT DADDY
BREAK CUE**

Unleash the power.

Birdseye Maple Forearm/
Sleeve
Viking Phenolic Tip | V
CRUSH Shaft Viking Quick
Release Joint
Grain Enhancement Stain
Viking SUPER Ferrule
Double-Pressed Irish Linen
Wrap

V176 | \$359

**BREAK /JUMP
CUE**

Unleash the power.

Two ways.

Birdseye Maple Forearm/
Sleeve
Viking Phenolic Tip | V
CRUSH Shaft
Viking Break Jump Quick
Release Joint | Grain
Enhancement Stain
Viking SUPER Ferrule
Double-Pressed Irish Linen
Wrap



VAL-BRK1

VAL-JMP1

VALHALLA
unrivaled craftsmanship.
merciless performance.

DESIGNED BY THE ENGINEERS AT VIKING

VALHALLA LIMITED LIFETIME WARRANTY, INCLUDING WARPAGE

Feel the power of the Valhalla BRK-I Break Cue. Featuring a stronger ferrule and a harder tip, the Valhalla BRK-I lets you hit with maximum force without worrying about damaging your shaft or mushrooming your tip.

See the entire Valhalla Line online, including the hot new

JMP-I Break Cue, at www.ValhallaCues.com.



VIKING CUE MANUFACTURING, LLC
WWW.VIKINGCUE.COM

VALHALLA BRK-1 BREAK CUE
JMP-1 JUMP CUE



VIKING ENGINEERING

It all starts with engineering excellence. While our technology is complex, the result is simple for you—more power with the V CRUSH shaft, more accuracy with the V PRO shaft and more spin with the V SPIN shaft. Designed for maximum player control, our interchangeable shafts can be selected according to the shot selection. The V Series shafts are a playing experience designed to be exceptional.



VIKING SUPER FERRULE

The V Series shafts feature the finest ferrule the billiards industry has ever known. Formulated from a proprietary material, the Viking SUPER ferrule is virtually indestructible! We put our ferrule through the industry's toughest impact tests; it's more like a torture test. With 250,000 in play and no cracked ferrules, you know we've done our homework. No other ferrule in the business can say that.



EVEREST® LAMINATED TIPS BY TIGER®

All of our V Series shafts feature an Everest® Laminated Cue Tip. Selected from the finest quality pig skins in the world, the Everest® Laminated Cue Tip is the most sophisticated, durable and advanced cue tip created. This cue tip shapes like a hard tip, hits like a medium and has a control like a soft tip.

MORE POWER.
MORE ACCURACY.
MORE SPIN.

VIKING PROVEN.

Available Joint Options and Brands

5/16 x 18 Black Collar

- Viking
- Action
- Ginacue
- Helmstetter
- Huebler
- J&J
- Judd
- Longoni
- Meucci
- Orchid
- Palmer
- Players
- Predator (pre 2002)
- Siegel
- Stealth
- Tad
- Varner

Uni-Loc Black Collar

- Dishaw
- DP
- Drexler
- Predator (post 2002)
- Samsara

5/16 x 14 Black Collar

- Helmstetter
- Josey
- Joss
- Joss West
- Nitti
- Prather

5/16 x 14 Silver Ring

- AE
- Balabuska
- Black Boar
- Black, Richard
- Buss, Jim
- Espiritu
- Falcon
- Jacoby
- McDaniels
- Mezz
- Mottey, Paul
- Nova
- Pechauer
- Prather
- Predator (pre 2002)
- Schon
- Scruggs

3/8 x 10 Black Collar Falcon

- Hunter
- Joss West
- Lambros
- McDermott
- McWorter
- Olivier



SPIN V SPIN	PRO V PRO	CRUSH V CRUSH		
\$129	\$129	\$129		
29"	29"	29"		
5 years	5 years	5 years		
11.75 mm	13 mm	13 mm	Size	
			• Phenolic	Tip Type
			• Tiger® Hard Tip	
•	•		Everest®	Joint Available
•	•	•	Color: Black	
•	•	•	5/16 x 18 Black Collar	
•	•	•	Uni-Loc Black Collar ^(*)	
•	•	•	5/16 x 14 Black Collar	
			5/16 x 14 Silver Ring	Ferrule
			3/8 x 10 Black Collar	
			Standard 1" Viking	
			• Conical	Taper
	•		Pro Taper	
•			European"	Benefit
		•	Extreme Power	
		•	Extreme Speed	
	•		Extreme Control	
	•		Extreme Accuracy	
•			Extreme Spin	Turnings
•			Extreme Action	
•	•	•	9-11 turnings over 18-24 months	Off-Notes
•	•	•	Lifetime Warranty	
•	•	•	Manufactured: USA	

FITS ALL MAJOR BRANDS.
^(*) Denotes Extra Charge



VALHALLA

unrivaled craftsmanship,
merciless performance.

BEHOLD VALHALLA

When it comes to pool, you're no amateur – you're a warrior. And in the heat of battle, when everything's on the line, you need more than just a stick. You need a real weapon, a finely balanced and perfectly weighted destroyer of men. And although you're not gonna win just by lookin' cool—cool doesn't hurt. **Behold Valhalla.** Designed by the engineers at Viking,

Valhalla cues bring high-tech performance and killer style to a single, powerful tool. Concentrated knowledge and hard-won insights explain the inner science. On the outside, they're pure flash and flare.

THE HISTORY OF VALHALLA

In the beginning, just before the time of men, the god Odin created a great mountain hall. And in this hall, as time

unspooled and men fought and strived in the world below, the god grew bored – and took up pool.

The physics of the game should've been simple for a god such as him. Yet balls sometimes caromed in unexpected ways, and once, he scratched. He blamed it on the mead, but secretly he doubted his omniscience.

Enough. A second forge was lit, its purpose to manufacture pool cues fit for warriors and deities. And there the Valkyries labored, producing cues of the finest caliber for the fighters below and the gods high above.

These cues looked as swank as they played. And Odin saw that it was good.

VALHALLA LIMITED LIFETIME WARRANTY, INCLUDING WARPAGE
Valhalla cues are warranted to be free from material and manufacturing defects for the lifetime of the cue, including warpage. Valhalla warrants all components provided that your cue is accompanied by a copy of the original sales receipt from an Authorized Viking/Valhalla Dealer. Normal wear on replaceable parts such as tips, ferrule, finish, wrap and bumper are excluded under this warranty. Valhalla does not warrant its product against damage caused by third parties. Valhalla may void this warranty if there is evidence of abuse or mishandling. Cues covered by this warranty will be repaired or replaced with the same model or one of equal value at no charge. This warranty applies to the original owner and is not transferable.



WARRIOR COLLECTION
\$219 to \$279



VALKYRIES COLLECTION
\$109 to \$199



OLD NORSE COLLECTION
\$39 to \$99



check the website at
www.valhallacues.com



VAL-044 | \$279.99

Warrior Collection

Birdseye Maple Forearm | 4 Premium Bocote Inlay Points | 4 West African Zebrawood Sleeve Inlays | 8 Zebrawood & Bocote Rings | Irish Linen Wrap | High Impact Ferrule | 5/16 x 18 Joint | Interchangeable Weight System | Premium Tip

VAL-043 | \$259.99

Warrior Collection

Birdseye Maple Forearm | 3 Rengas Tigerwood Inlay Points | 6 Mother of Pearl Inlays | 2 Rengas Rings on Sleeve | Irish Linen Wrap | High Impact Ferrule | 2 Rengas Joint Rings | 5/16 x 18 Joint | Interchangeable Weight System | Premium Tip

VAL-042 | \$249.99

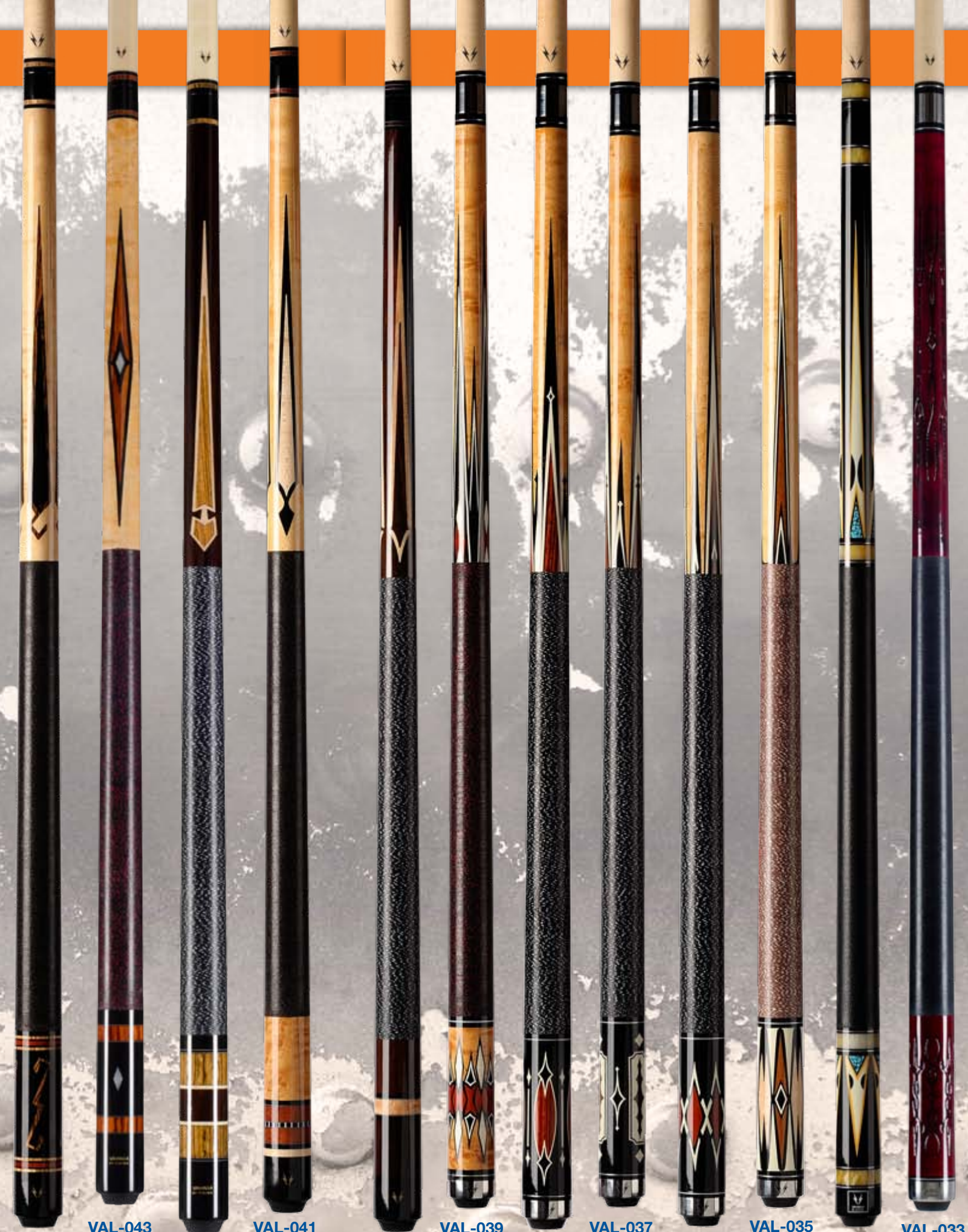
Warrior Collection

Premium Rosewood Forearm/Sleeve | 4 Premium Bocote/Birdseye Maple Inlay Points | 4 Bocote/Maple Rings on Sleeve | Irish Linen Wrap | High Impact Ferrule | 2 Bocote Joint Rings | 5/16 x 18 Joint | Interchangeable Weight System | Premium Tip

VAL-041 | \$229.99

Warrior Collection

Birdseye Maple Forearm/Sleeve | 4 Birdseye Maple Inlay Points | 2 Exotic Hardwood Rings on Sleeve | Irish Linen Wrap | High Impact Ferrule | 2 Hardwood Joint Rings | 5/16 x 18 Joint | Interchangeable Weight System | Premium Tip



VAL-044 VAL-043 VAL-042 VAL-041 VAL-040 VAL-039 VAL-038 VAL-037 VAL-036 VAL-035 VAL-034 VAL-033



VAL-040 | \$219.99

Warrior Collection

Premium Rosewood Forearm/Sleeve | 4 Birdseye Maple Inlay Points | Birdseye Maple Ring | Irish Linen Wrap | High Impact Ferrule | 2 Rosewood Joint Rings | 5/16 x 18 Joint | Interchangeable Weight System | Premium Tip

VAL-039 | \$189.99

Valkyries Collection

Birdseye Maple Forearm/Sleeve | 4 African Padauk Inlay Points | 12 Padauk Sleeve Inlays | Irish Linen Wrap | High Impact Ferrule | Stainless Steel Butt & Joint | 5/16 x 18 Joint | Interchangeable Weight System | Premium Tip

VAL-038 | \$189.99

Valkyries Collection

Birdseye Maple Forearm | 4 Rengas Tigerwood Inlay Points | 4 Rengas Sleeve Inlays | Irish Linen Wrap | High Impact Ferrule | Stainless Steel Butt & Joint | 5/16 x 18 Joint | Interchangeable Weight System | Premium Tip

VAL-037 | \$189.99

Valkyries Collection

Birdseye Maple Forearm | 4 Exotic Hardwood Inlay Points | 4 Hardwood Sleeve Inlays | Irish Linen Wrap | High Impact Ferrule | Stainless Steel Butt & Joint | 5/16 x 18 Joint | Interchangeable Weight System | Premium Tip

VAL-036 | \$189.99

Valkyries Collection

Birdseye Maple Forearm | 6 African Padauk Inlay Points | 6 Padauk Sleeve Inlays | Irish Linen Wrap | High Impact Ferrule | Stainless Steel Butt & Joint | 5/16 x 18 Joint | Interchangeable Weight System | Premium Tip

VAL-035 | \$189.99

Valkyries Collection

Maple Forearm/Sleeve | 4 Malaswood Inlay Points | 4 Malaswood Sleeve Inlays | Irish Linen Wrap | High Impact Ferrule | Stainless Steel Butt & Joint | 5/16 x 18 Joint | Interchangeable Weight System | Premium Tip

VAL-034 | \$189.99

Valkyries Collection

Birdseye Maple Forearm/Sleeve | 10 Point Transfers | 5 White Pearl Rings | Irish Linen Wrap | High Impact Ferrule | 10 Nickel Silver Rings | 5/16 x 18 Joint | Interchangeable Weight System | Premium Tip

VAL-033 | \$179.99

Valkyries Collection

Birdseye Maple Forearm/Sleeve | CNC Laser Burning Technology | Stainless Steel Butt & Joint | Irish Linen Wrap | High Impact Ferrule | 3 Nickel Silver Rings | 5/16 x 18 Joint | Interchangeable Weight System | Premium Tip

**VAL-032** | \$179.99**Valkyries Collection**

Birdseye Maple Forearm/Sleeve | CNC Laser Burning Technology | Stainless Steel Butt & Joint | Irish Linen Wrap | High Impact Ferrule | 3 Nickel Silver Rings | 5/16 x 18 Joint | Interchangeable Weight System | Premium Tip

VAL-031 | \$179.99**Valkyries Collection**

Hard Rock Maple Forearm | Soft-Tech Nano Technology Wrap | Forearm Transfer Stainless Steel Butt & Joint | High Impact Ferrule | 2 Nickel Silver Rings | 5/16 x 18 Joint | Interchangeable Weight System | Premium Tip

VAL-030 | \$179.99**Valkyries Collection**

Hard Rock Maple Forearm | Soft-Tech Nano Technology Wrap | Stainless Steel Butt & Joint | High Impact Ferrule | 2 Nickel Silver Rings | 5/16 x 18 Joint | Interchangeable Weight System | Premium Tip

VAL-029 | \$179.99**Valkyries Collection**

Premium Bocote Forearm & Sleeve | 5 Sets of Index Rings | Irish Linen Wrap | High Impact Ferrule | 10 Nickel Silver Rings | 5/16 x 18 Joint | Interchangeable Weight System | Premium Tip

VAL-028 | \$169.95**Valkyries Collection**

Premium Rosewood Forearm & Sleeve | 5 Sets of Index Rings | Irish Linen Wrap | High Impact Ferrule | 10 Nickel Silver Rings | 5/16 x 18 Joint | Interchangeable Weight System | Premium Tip

VAL-027 | \$159.99**Valkyries Collection**

Birdseye Maple Forearm/Sleeve | 5 Point Transfers | 2 Blue Pearl Rings | Irish Linen Wrap | High Impact Ferrule | 6 Nickel Silver Rings | 5/16 x 18 Joint | Interchangeable Weight System | Premium Tip

VAL-026 | \$159.99**Valkyries Collection**

Birdseye Maple Forearm/Sleeve | 5 Point Transfers | 2 Blue Pearl Rings | Linen Wrap | High Impact Ferrule | 6 Nickel Silver Rings | 5/16 x 18 Joint | Interchangeable Weight System | Premium Tip

VAL-025 | \$149.99**Valkyries Collection**

Birdseye Maple Forearm/Sleeve | 10 Point Transfers | 5 Sets of Index Rings | Irish Linen Wrap | High Impact Ferrule | 10 Nickel Silver Rings | 5/16 x 18 Joint | Interchangeable Weight System | Premium Tip

**VAL-024** | \$149.99**Valkyries Collection**

Birdseye Maple Forearm/Sleeve | 10 Point Transfers | White Pearl Ring | European Stain | Irish Linen Wrap | High Impact Ferrule | 6 Nickel Silver Rings | 5/16 x 18 Joint | Interchangeable Weight System | Premium Tip

VAL-023 | \$139.99**Valkyries Collection**

Premium Rosewood Forearm & Sleeve | 3 Rengas Tigerwood Rings | Irish Linen Wrap | High Impact Ferrule | 5/16 x 18 Joint | Interchangeable Weight System | Premium Tip

VAL-022 | \$139.99**Valkyries Collection**

Rengas Tigerwood Forearm & Sleeve | 3 West African Zebrawood Rings | Irish Linen Wrap | High Impact Ferrule | 5/16 x 18 Joint | Interchangeable Weight System | Premium Tip

VAL-021 | \$129.99**Valkyries Collection**

North American Hard Rock Maple | 10 Point Transfers | European Stain | Irish Linen Wrap | High Impact Ferrule | 5 Nickel Silver Rings | 5/16 x 18 Joint | Interchangeable Weight System | Premium Tip

VAL-020 | \$129.99**Valkyries Collection**

North American Hard Rock Maple | 6 Turquoise / Birdseye Point Transfers | Irish Linen Wrap | High Impact Ferrule | 3 Nickel Silver Rings | 5/16 x 18 Joint | Interchangeable Weight System | Premium Tip

VAL-019 | \$119.99**Valkyries Collection**

North American Hard Rock Maple | 6 4-Color Point Transfers | Irish Linen Wrap | High Impact Ferrule | 3 Nickel Silver Rings | 5/16 x 18 Joint | Interchangeable Weight System | Premium Tip

VAL-018 | \$109.99**Valkyries Collection - Break Cue**

North American Hard Rock Maple/Exotic Hardwood | 4 Splice Point Construction w/ Dual Veneers | European Stain | High Impact Ferrule | 5/16 x 18 Hustler Style Joint | Interchangeable Weight System | Premium Extra Hard Tip | Strong Taper

VAL-017 | \$109.99**Valkyries Collection**

North American Hard Rock Maple/Exotic Hardwood | 4 Splice Point Construction w/ Dual Veneers | European Stain | High Impact Ferrule | 5/16 x 18 Hustler Style Joint | Interchangeable Weight System | Premium Tip

VAL-032

VAL-031

VAL-030

VAL-029

VAL-028

VAL-027

VAL-026

VAL-025

VAL-024

VAL-023

VAL-022

VAL-021

VAL-020

VAL-019

VAL-018

VAL-017



VAL-016 | \$99.99
Old Norse Collection
 Birdseye Maple Forearm/Sleeve | 6 Turquoise Point Transfers | Irish Linen Wrap | High Impact Ferrule | 3 Nickel Silver Rings | 5/16 x 18 Joint Interchangeable Weight System | Premium Tip

VAL-015 | \$89.99
Old Norse Collection
 Birdseye Maple Forearm/Sleeve | Multi-color Point Transfers | Irish Linen Wrap | High Impact Ferrule | 3 Nickel Silver Rings | 5/16 x 18 Joint Interchangeable Weight System | Premium Tip

VAL-014 | \$89.99
Old Norse Collection
 Birdseye Maple Forearm/Sleeve | Multi-color Point Transfers | Irish Linen Wrap | High Impact Ferrule | 3 Nickel Silver Rings | 5/16 x 18 Joint Interchangeable Weight System | Premium Tip

VAL-013 | \$89.99
Old Norse Collection Jump Cue
 North American Hard Rock Maple / Malaswood Jump Cue | 4 Spliced Points | High Impact Ferrule | Strong Taper | 5/16 x 18 Joint | Interchangeable Weight System | Premium Tip

VAL-012 | \$79.99
Old Norse Collection
 Birdseye Maple Forearm/Sleeve | Irish Linen Wrap | 16 Point Transfers | High Impact Ferrule | 3 Nickel Silver Rings | 5/16 x 18 Joint Interchangeable Weight System | Premium Tip

VAL-011 | \$79.99
Old Norse Collection
 North American Hard Rock Maple | Irish Linen Wrap | 16 Point Transfers | European Stain | High Impact Ferrule | 3 Nickel Silver Rings | 5/16 x 18 Joint | Interchangeable Weight System | Premium Tip

VAL-010 | \$79.99
Old Norse Collection
 North American Hard Rock Maple/Rosewood 4 Splice Point Construction | High Impact Ferrule | 5/16 x 18 Hustler Style Joint | Interchangeable Weight System | Premium Tip

VAL-009 | \$69.99
Old Norse Collection
 North American Hard Rock Maple/Exotic Hardwood | 4 Splice Point Construction | High Impact Ferrule | 5/16 x 18 Hustler Style Joint | Interchangeable Weight System | Premium Tip

VAL-008 | \$59.99
Old Norse Collection
 Birdseye Maple Forearm/Sleeve | Nylon Wrap | 5 Point Transfers | European Stain | High Impact Ferrule | 3 Nickel Silver Rings | 5/16 x 18 Joint Interchangeable Weight System | Premium Tip

VAL-007 | \$59.99
Old Norse Collection
 Birdseye Maple Forearm/Sleeve | Nylon Wrap | 5 Point Transfers | European Stain | High Impact Ferrule | 3 Nickel Silver Rings | 5/16 x 18 Joint Interchangeable Weight System | Premium Tip

VAL-006 | \$59.99
Old Norse Collection
 Birdseye Maple Forearm/Sleeve | Nylon Wrap | 5 Point Transfers | High Impact Ferrule | 3 Nickel Silver Rings | 5/16 x 18 Joint Interchangeable Weight System | Premium Tip

VAL-005 | \$49.99
Old Norse Collection
 Birdseye Maple Forearm/Sleeve | 12 Point Transfers High & Low | European Stain | High Impact Ferrule | 3 Nickel Silver Rings | 5/16 x 18 Joint | Interchangeable Weight System | Premium Tip

VAL-004 | \$49.99
Old Norse Collection
 Birdseye Maple Forearm/Sleeve | 12 Point Transfers High & Low | High Impact Ferrule | 3 Nickel Silver Rings | 5/16 x 18 Joint | Interchangeable Weight System | Premium Tip

VAL-003 | \$39.99
Old Norse Collection
 Birdseye Maple Forearm/Sleeve | European Stain | High Impact Ferrule | 3 Nickel Silver Rings | 5/16 x 18 Joint | Interchangeable Weight System | Premium Tip

VAL-002 | \$39.99
Old Norse Collection
 Birdseye Maple Forearm/Sleeve | European Stain | High Impact Ferrule | 3 Nickel Silver Rings | 5/16 x 18 Joint | Interchangeable Weight System | Premium Tip

VAL-001 | \$39.99
Old Norse Collection
 Birdseye Maple Forearm/Sleeve | High Impact Ferrule | 3 Nickel Silver Rings | 5/16 x 18 Joint | Interchangeable Weight System | Premium Tip

VAL-016 VAL-015 VAL-014 VAL-013 VAL-012 VAL-011 VAL-010 VAL-009 VAL-008 VAL-007 VAL-006 VAL-005 VAL-004 VAL-003 VAL-002 VAL-001



CUSTOM OPTIONS & ACCESSORIES

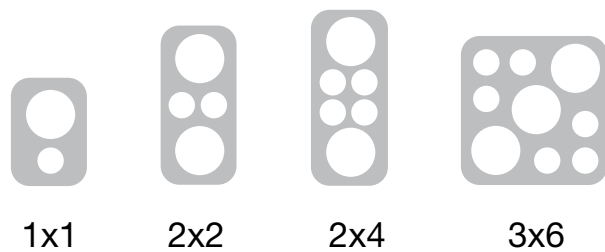
Choosing the perfect color for your Viking cue might take some time. That's why we put all of the options right here so you can make the choices that evoke your feelings and express your character.

CASES

- Soft Cases \$29
- 1x1 Hard Case \$65
- 2x2 Hard Case \$95
- 2x4 Hard Case \$129
- 3x6 Hard Case \$139



Foam-lined compartments feature individual pockets for the shaft and butt for added protection. Shoulder straps and handles on each.

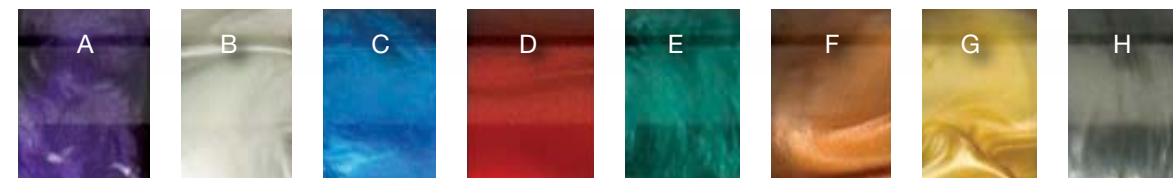


JOINT STYLES

Each Viking Cue joint has wood on wood contact surfaces for a natural, solid feel. The different shaft and butt material combinations modify the type of hit produced. The type of hit refers to how the cue feels when energy flows down the shaft, through the joint, and into the butt upon striking the ball. In most instances, joint selection is merely a matter of personal preference. Viking manufactures each joint component in-house to assure the parts are flawless. Then, using custom designed CNC machinery, we assemble the joints to assure dead-on accuracy.



PEARL A classic touch for any cue, in 8 beautiful colors.



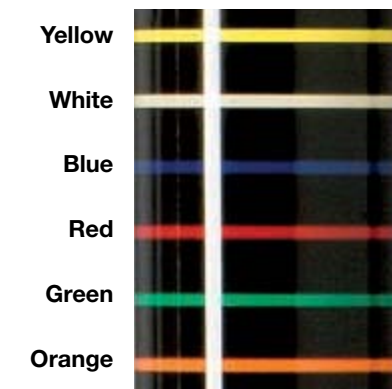
- (A) Violet
- (B) Icy White
- (C) Brilliant Blue
- (D) Ragin' Red
- (E) Emerald Green
- (F) Bronze
- (G) Bright Gold
- (H) Smoke

LINEN WRAPS 100% Irish Linen - *Leather Wraps Available*



VINYL

Thin rings of bright color



ENGRAVING

Personalize your cue with our custom engraving. Choose from Roman, Block or Script Lettering



STAIN

Add rich, vibrant colors to any maple or bird's-eye maple butt. Choose from these 13 colors.



TECHNICAL SPECIFICATIONS

TECHNICAL SPECIFICATIONS VIKING USA

More accuracy.
More power.
More finesse.
VIKING PROVEN.



Since 1965

Made exclusively in the USA

Tip: Everest® Laminated Tip

Ferrule: Viking SUPER Ferrule, capped and threaded onto the shaft

Wrap: 100% Irish Linen, Double Pressed; Premium Leather; Exotic Leather

Shaft:

V PRO 12"-14" Taper

V SPIN European Taper

V CRUSH 0" Conical Taper

Finish: Ultra-violet Urethane 3 coat finish

Wood Types: Premium exotic woods from Africa, North America, South America, Central America, and Australia; Heavy Birdseye Maple; Birdseye Maple; Hard Rock Maple

Joint: High Impact Modified Acrylic, flat faced with a brass insert; Stainless Steel

Pin: Viking 5/16 x 18 quick release, stainless steel

Butt Plate: High Impact Modified Acrylic with Viking Logo; Premium Pearl; Exotic Woods

Bumper: Threaded rubber

Weight System: Interchangeable

Engraving: Available

Customization: 21 wraps; 11 stains; 8 pearls; Weight; Tip Size

Manufacturing Facility: Madison, Wisconsin

Warranty: Lifetime, including warpage

TECHNICAL SPECIFICATIONS VALHALLA

Unrivaled craftsmanship.
Merciless performance.
A new breed of pool cue.



Tip: Premium Leather

Ferrule: High Impact Resin

Wrap: 100% Irish Linen, Soft-Tech Nano Grip

Shaft: North American Hard Rock Maple Grade AA

Taper: 12" to 14" Pro Taper

Finish: Ultra Violet Urethane

Wood Types: Exotic woods from Africa, North America and South America; Birdseye Maple; Birdseye Maple; Hard Rock Maple

Joint: 5/16 x 18

Pin: Stainless Steel

Butt Plate: Urethane; Stainless Steel

Bumper: Rubber

Weight System: Interchangeable

Engraving: Available

Customizing: Available

Warranty: Lifetime, including warpage

LIFETIME WARRANTY INCLUDING WARPAGE

All Viking cues are meticulously handcrafted in the U.S.A. from the finest materials and subject to the strictest quality control standards to bring you the best cue in the industry.

VIKING CARE.

The Viking Ownership Experience is based on a promise that each owner will enjoy comprehensive and personalized service. The Viking Team believes that building exceptional customer satisfaction and personal relationships are of the highest priority. Our new Viking Cue Repair Center is ready to handle any cue repair for you.

CONTACT VIKING

Our customer service department is available 24 hours a day through sales@vikingcue.com to help get you answers to your Viking cue questions.

WARRANTY/REPAIR/SERVICE WORK

Send your entire cue (butt and shaft) to:

Viking Cue Manufacturing LLC
Attn: Service Department
2710 Syene Road
Madison, WI 53713

Please include a warranty repair form found on www.vikingcuerepair.com. All warranty claims are subject to factory approval upon inspection.

Viking OWNER BENEFITS

From the moment you purchase one of our cues, it's our philosophy to show you why owning a Viking will be as inspiring as playing with one. By recognizing, understanding and anticipating what a billiards player demands, we can meet each player's needs, while at the same time surpassing their expectations.

Overall excellence and a rewarding experience is something we take great pride in. After all, a premium billiard cue is only part of the ownership experience. With Viking, you also get a commitment to personalized care. To amazing service. We believe that owning a Viking cue should be a rewarding experience.



CUE EMERGENCY?

When it comes to protection, we've got you covered.
All brands. All repairs.

Viking: the most trusted cue repair professionals.

We are the top Tip & Ferrule Repair, Shaft Repair, Joint & Butt Repair and Pool Cue Refurbishing & Refinishing Specialists in the USA. Since 1965, we have serviced, repaired and refurbished over 30,000 pool cues. Our team of highly skilled, factory-trained cuemakers is here to assist and serve you every step of the way. Simply let us know how we can help!

We service a large variety of cues from around the United States.

vikingcuerepair.com



Scan the mobile tag to see our cue repair video.



BLACK ICE
CUE SERIES



VALHALLA BY

unrivaled craftsmanship.
merciless performance.





Scan the mobile tag
to see our video.



Since 1965

Viking Cue Manufacturing, LLC
2710 Syene Road
Madison, Wisconsin 53713

Toll Free: (800) 397-0122

Fax: (608) 271-5157

Email: sales@vikingcue.com



Get the latest Viking News,
follow us on facebook and twitter